



# LS160: HOUSES IN THE HEART OF THE FOREST IN EUROPEAN ISTANBUL

Istanbul, Eyup

REAL ESTATE INVESTMENT

**LS** LUXURY SIGNATURE

*Luxury Investing*



# PROPERTY DESCRIPTION



*Luxury Investing*

The project is located in one of the most important streets in Gokturk district, on the European side of Istanbul.

All your needs for your daily life can be met in this project. It is surrounded by shops, cafes and restaurants, shopping malls, hospitals and schools.

This project has a very spacious area, at the entrance of the highway and intertwined with the forest.





*Luxury Investing*

BAU is located opposite to the project. In addition to that, the closest means of transportation is just 4 minutes walking distance from the project.

There is a metro station in the project area, which will ease your movement around the city.

From your home, you can reach Istanbul airport in just 15 minutes by car, and business centers such as Kagithane, Maslak and Levent in 20 minutes by car.

The project is 5 minutes drive from the sports center of "Kemer Country Club", which is the only golf club in Istanbul.





*Luxury Investing*

The delivery date of our project will be at the end of 2025.

The project is being built on an area of 36.000 sqm, in the heart of forest and nature, and it has a 10.000 sqm completely green area.

It consists of 9 blocks in total and the blocks vary between 2 and 7 floors.

We have between 2 and 5 apartments on each floor. The apartments range from 1+1 to 5.5+1 and there will be 274 flats in total.

Each apartment has its own balcony, and the apartments on the ground floor have a private terrace.





## PROPERTY LOCATION

- It is 15 minutes away from Istanbul Airport
- It is 15 minutes away from Vadi Istanbul Mall
- It is 5 minutes away from Bahcesehir University
- It is 5 minutes away from the metro station
- It is 10 minutes away from TEM highway
- It is 1 minute away from Belgrad Forest





*Luxury Investing*

# PROPERTY FEATURES



Swimming Pool



Garage



Gardens



Elevator



Gym



Sauna



Security



Turk Hamam



*Luxury Investing*



# PROJECT PHOTOS

REAL ESTATE INVESTMENT



*Luxury Investing*



# PROJECT PHOTOS

REAL ESTATE INVESTMENT



*Luxury Investing*



PROJECT  
PHOTOS

REAL ESTATE INVESTMENT





PROJECT  
PHOTOS

REAL ESTATE INVESTMENT



*Luxury Investing*



REAL ESTATE INVESTMENT  
PROJECT  
PHOTOS





PROJECT  
PHOTOS

REAL ESTATE INVESTMENT



*Luxury Investing*



REAL ESTATE INVESTMENT  
PROJECT  
PHOTOS



*Luxury Investing*



REAL ESTATE INVESTMENT  
PROJECT  
PHOTOS













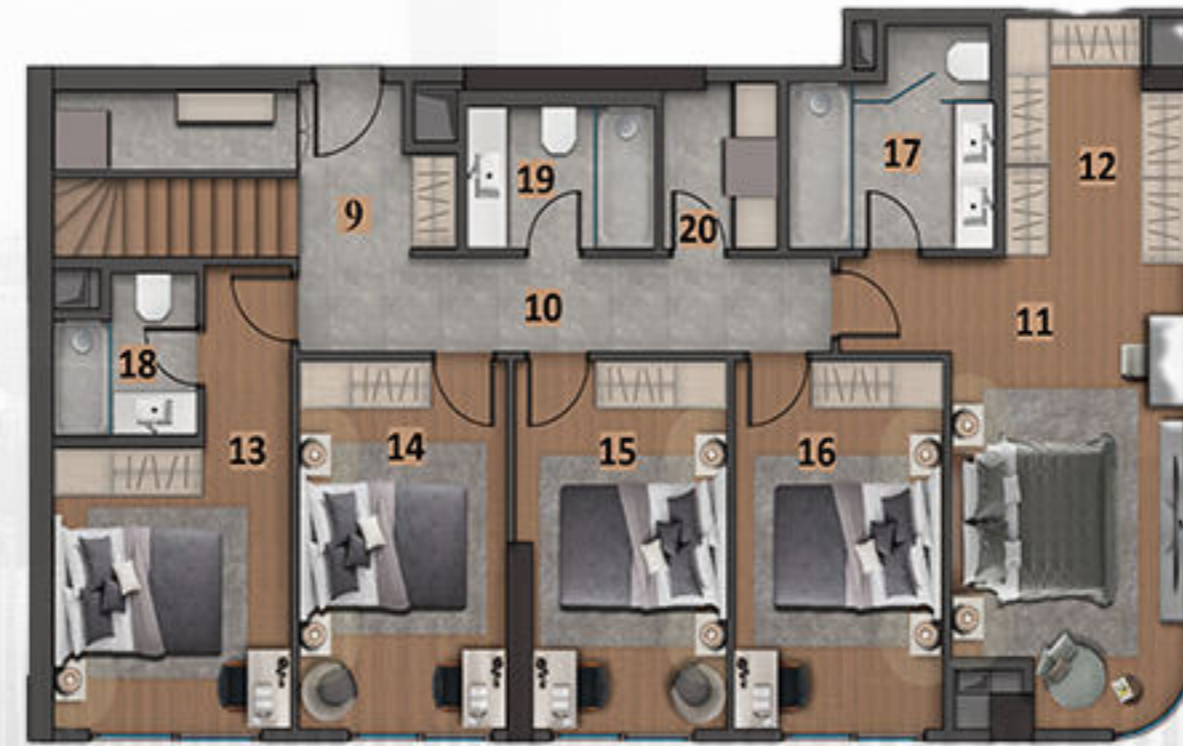
















CONTACT  
US

0 212 924 97 37  
info@luxurysignature.net  
www.luxurysignature.net

Skyland İstanbul, Huzur Mah.  
Cendere Cad. 515/B Blok,  
Sarıyer/İstanbul