



LS128

Ready To Move

# INVESTMENT TOWER WITH ISLANDS VIEW IN KARTAL

Kartal, Istanbul, Turkey

REAL ESTATE INVESTMENT



*Luxury Investing*

## PROPERTY DESCRIPTION

Each house in this project has a different view, but some are definitely unique.

The project provides you the comfort of living in the city center while turning each day into a unique experience with the view of Prince's Islands.

The project presents living spaces that fit your dreams and a profitable investment opportunity.



*Luxury Investing*

Each detail meticulously thought out and many amenities brought together in one living space.

It is a special project designed for different needs.

The project has a land area of 37.015 sqm, and a construction area of 5707 sqm.

It is a single tower that includes 220 apartments in addition to commercial units.

The apartment types available in the project are 1+1, 2+1, 3+1, in addition to penthouses of the types 2.5+1 and 3.5+1.



*Luxury Investing*

REAL ESTATE INVESTMENT

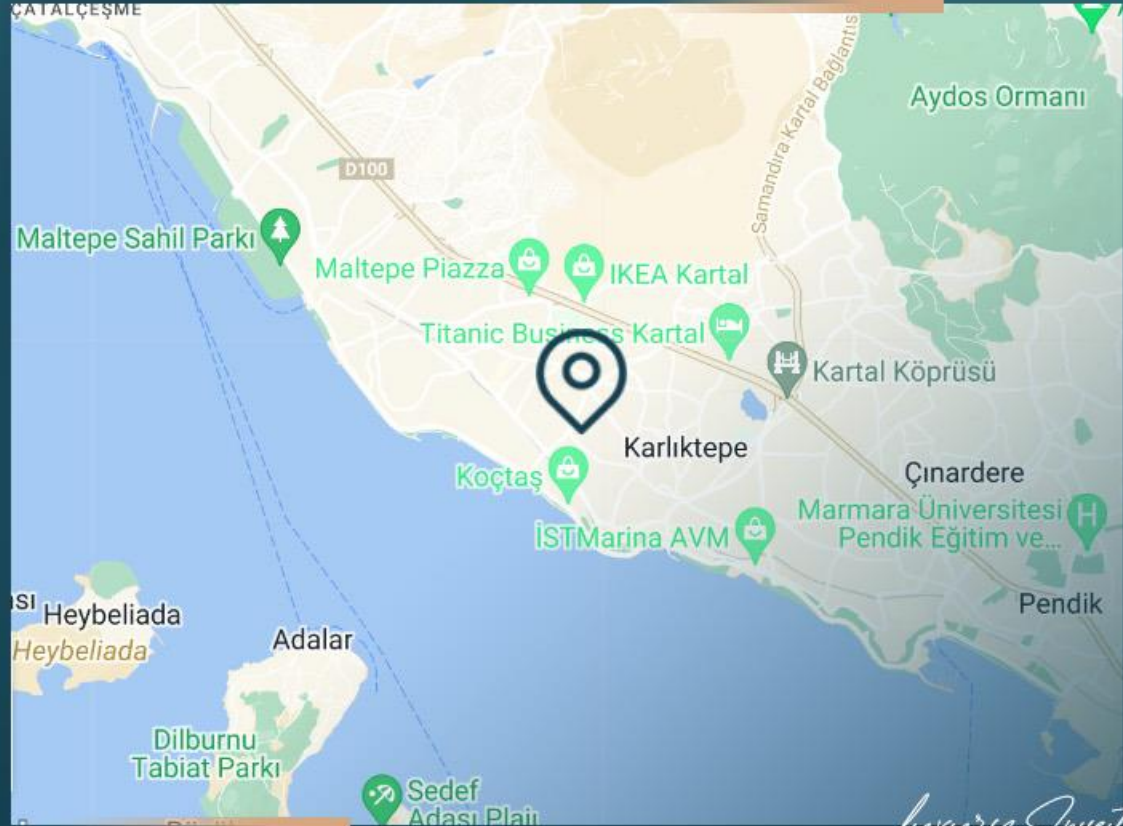
The project is positioned just right for your social life in Kartal, one of Istanbul's most popular and valuable life centers on the Asian side.

It is characterized by its proximity to air, sea and land transportation and it is just a walking distance to the metro, which saves your precious time.

In this project, you can enjoy every spot of the city and have easy access to everywhere in your daily life and live Istanbul to the fullest.

In this project, your life quality will increase, as you are minutes away from universities, shopping malls and hospitals.

REAL ESTATE INVESTMENT



## PROPERTY LOCATION

It is 5 minutes away from the coastline

It is 25 minutes away from Sabiha Airport

It is 2 minutes away from the metro station

It is 2 minutes away from private schools

It is 7 minutes away from Marmara University

It is 5 minutes away from hospitals

It is 5 minutes away from Ikea

It is 10 minutes away from Maltepe Piazza Mall

It is 5 minutes away from Istmarina Mall

*Luxury Investing*



*Luxury Investing*

# PROPERTY FEATURES

- Garage
- Gym
- Elevator
- Security
- Near by metro
- Swimming Pool
- Turk Hamam
- Sauna

*Luxury Investing*



REAL ESTATE INVESTMENT

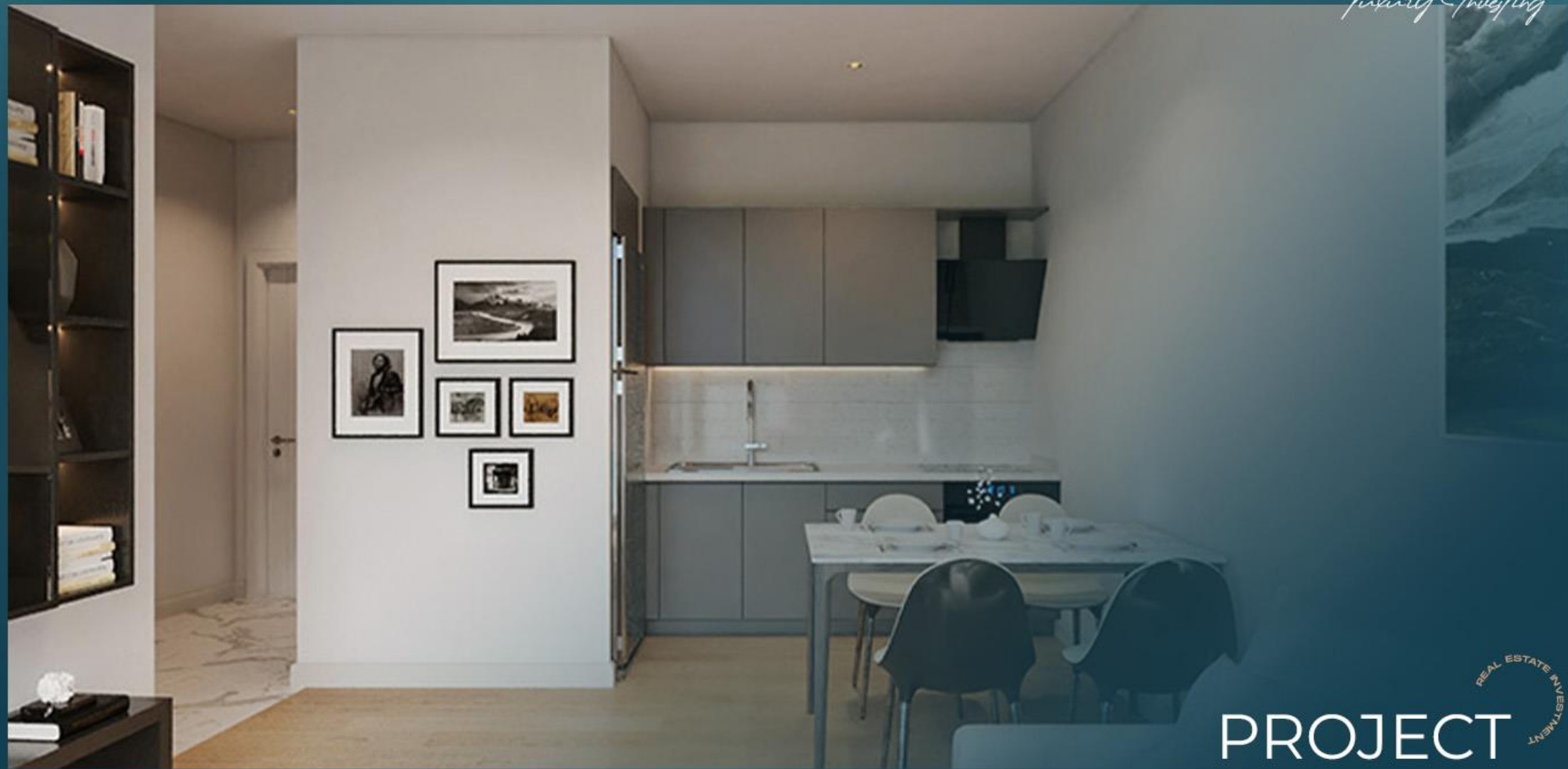
PROJECT  
PHOTOS



PROJECT  
PHOTOS

REAL ESTATE INVESTMENT





*Luxury Investing*



PROJECT  
PHOTOS

REAL ESTATE INVESTMENT

*Luxury Investing*



REAL ESTATE INVESTMENT

PROJECT  
PHOTOS



REAL ESTATE INVESTMENT  
**PROJECT  
PHOTOS**

*Luxury Investing*



# PROJECT PHOTOS

REAL ESTATE INVESTMENT

*Luxury Investing*



REAL ESTATE INVESTMENT

# PROJECT PHOTOS











CONTACT  
US

0 212 924 97 37  
info@luxurysignature.net  
www.luxurysignature.net

Skyland İstanbul, Huzur Mah.  
Cendere Cad. 515/B Blok,  
Sarıyer/İstanbul