



LS367: HIGH-END
PROPERTIES IN THE CENTER
OF ISTANBUL IN SISLI
Sisli, Istanbul

REAL ESTATE INVESTMENT



Luxury Investing

PROPERTY DESCRIPTION

The project comprises two blocks, each consisting of 13 floors and housing a total of 128 residential units, available in 1+1 and 2+1 types.



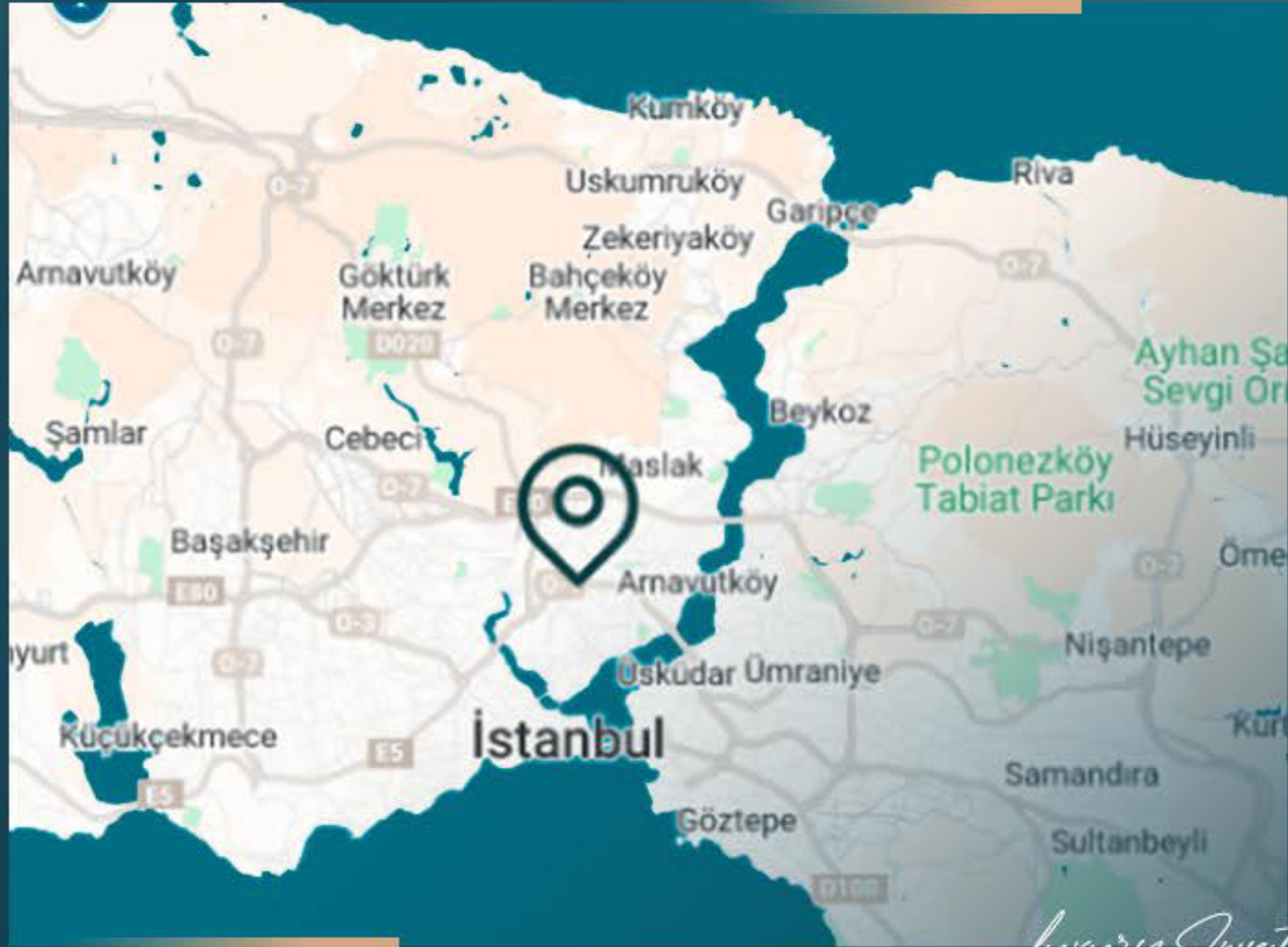
Located in the Sisli district on the European side of Istanbul, the project spans a land area of 3.550 square meters.



Luxury Investing

The project will feature a comprehensive range of amenities, including a swimming pool, sauna, gym, luxurious lobby, roof garden, security services, parking facilities, meeting room, and a Turkish bath.

The project is under construction, and it is scheduled for completion and delivery in December 2026.

*luxury investing*

PROPERTY LOCATION

It is 1 minute away from the bus station

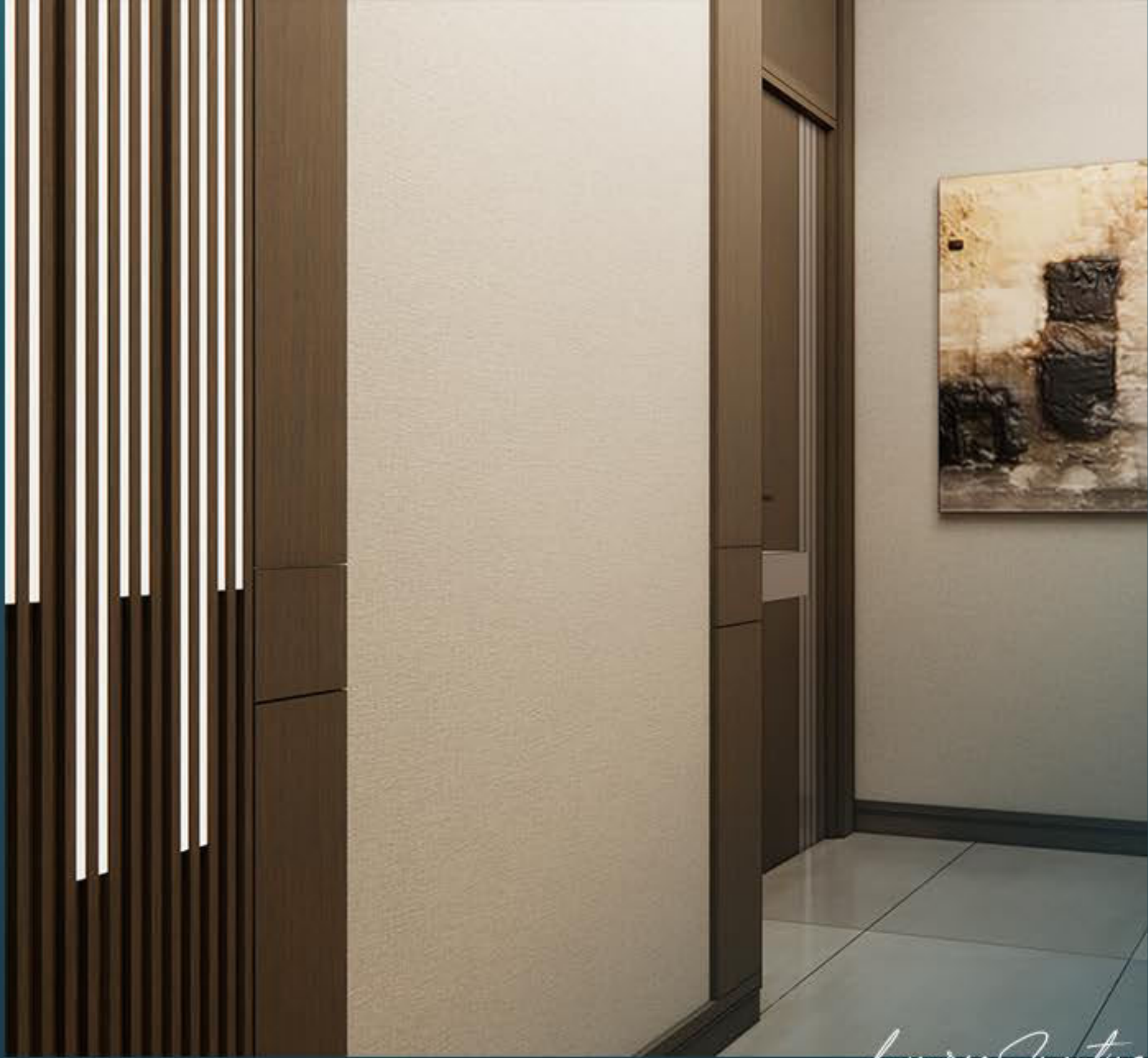
It is 5 minutes away from Cevahir Shopping Mall

It is 7 minutes away from Trump Tower

It is 10 minutes away from Taksim

It is 15 minutes away from the metro station

It is 30 minutes away from Istanbul Airport



Luxury Investing

PROPERTY FEATURES



Gardens



Gym



Security



Garage



Elevator



Sauna

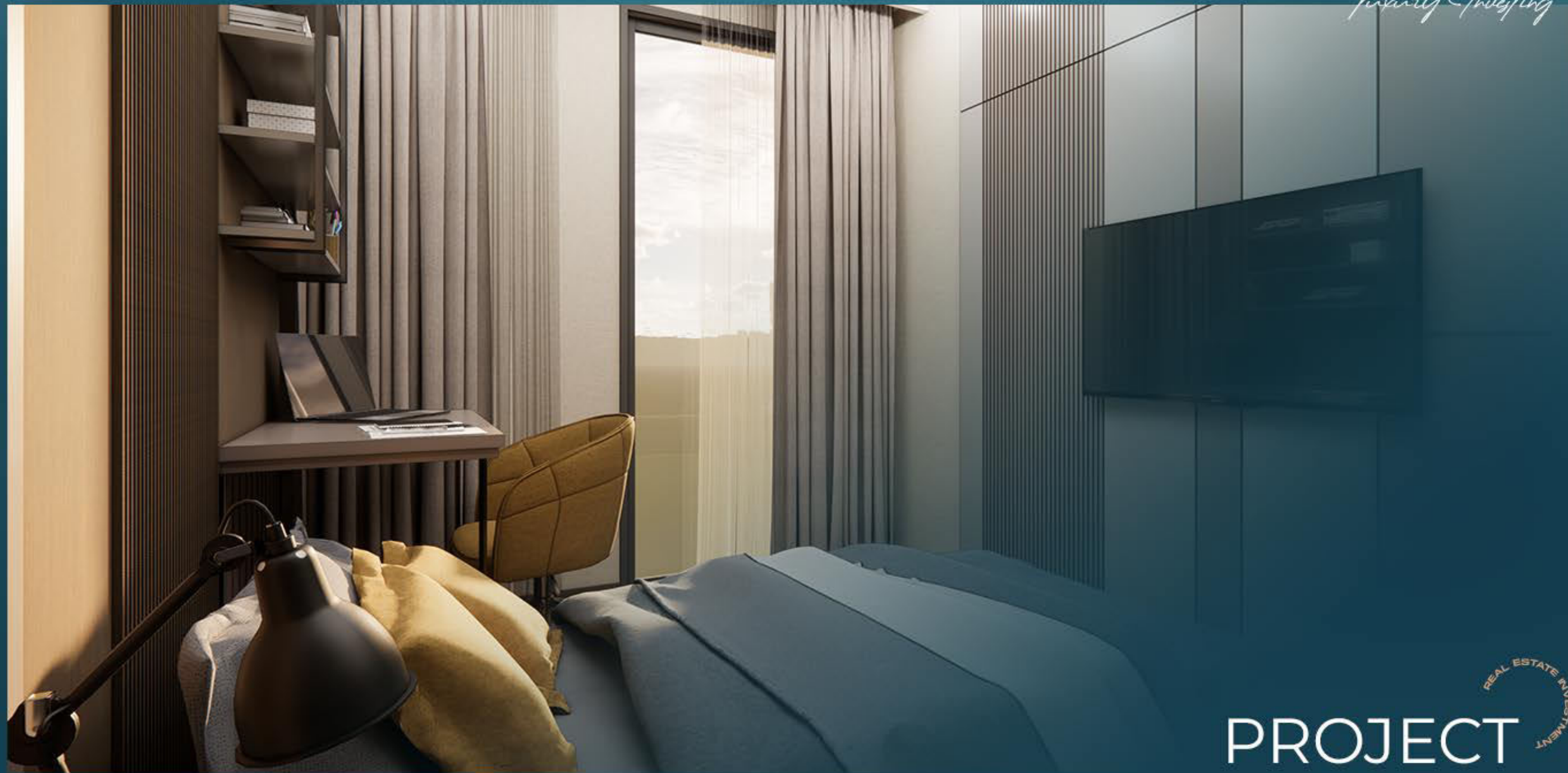


Turk Hamam



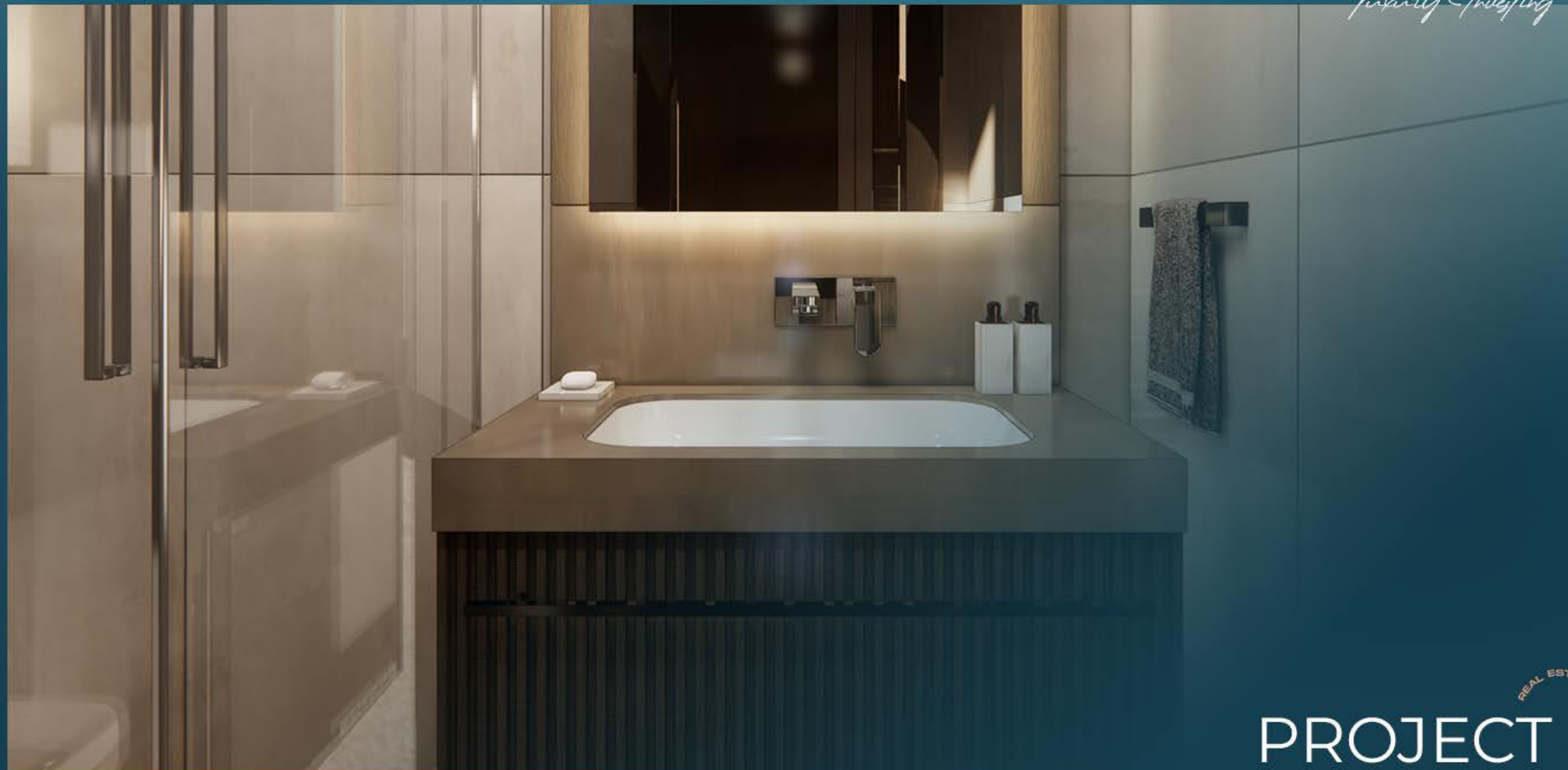
Swimming Pool

Luxury Investing



REAL ESTATE INVESTMENT
PROJECT
PHOTOS

Luxury Investing



PROJECT
PHOTOS

REAL ESTATE INVESTMENT

Luxury Investing



PROJECT
PHOTOS

REAL ESTATE INVESTMENT

Luxury Investing



PROJECT
PHOTOS

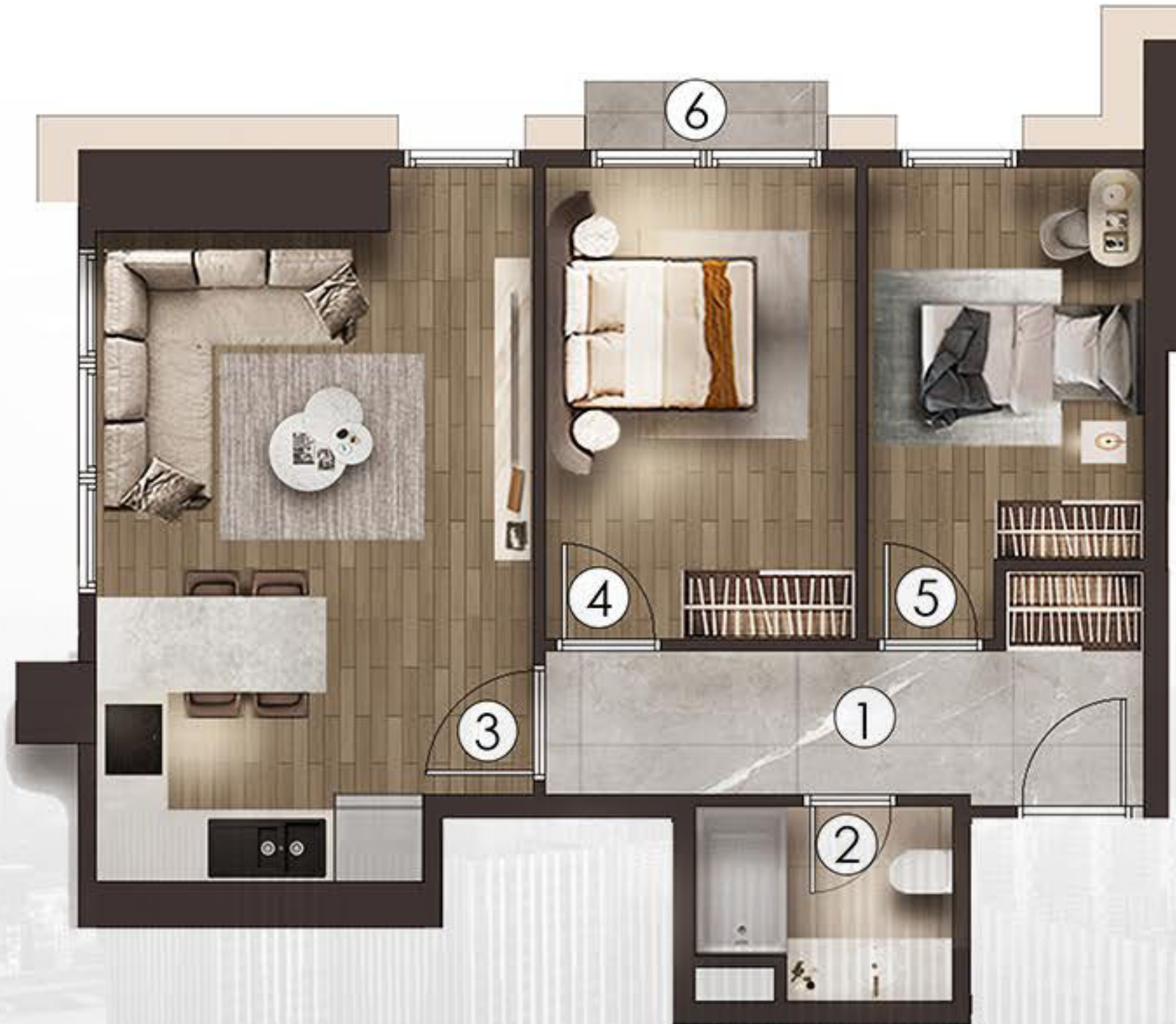
REAL ESTATE INVESTMENT

Luxury Investing



PROJECT PHOTOS

REAL ESTATE INVESTMENT







CONTACT
US

0 212 924 97 37
info@luxurysignature.net
www.luxurysignature.net

Skyland İstanbul, Huzur Mah.
Cendere Cad. 515/B Blok,
Sarıyer/İstanbul