



LS168: VILLAS IN BODRUM NEAR THE MARINA

Bodrum, Turkey

REAL ESTATE INVESTMENT

LS LUXURY
SIGNATURE

Luxury Investing



PROPERTY DESCRIPTION

A life in Bodrum reaching out to infinite dreams is waiting for you in this project.

Wide windows and terraces opening out to the beautiful Aegean sea.

Eternally chic apartments with sun, waves and sails passing in front of it.

Welcome to the dreamlike world in Yalıkavak in Bodrum.



Luxury Investing

It offers an exclusive life in Yalıkavak, the main point of Bodrum.

Natural and warm line of one-floor villas in this project, wide distance between apartment blocks, greeting a free and authentic life in all aspects.

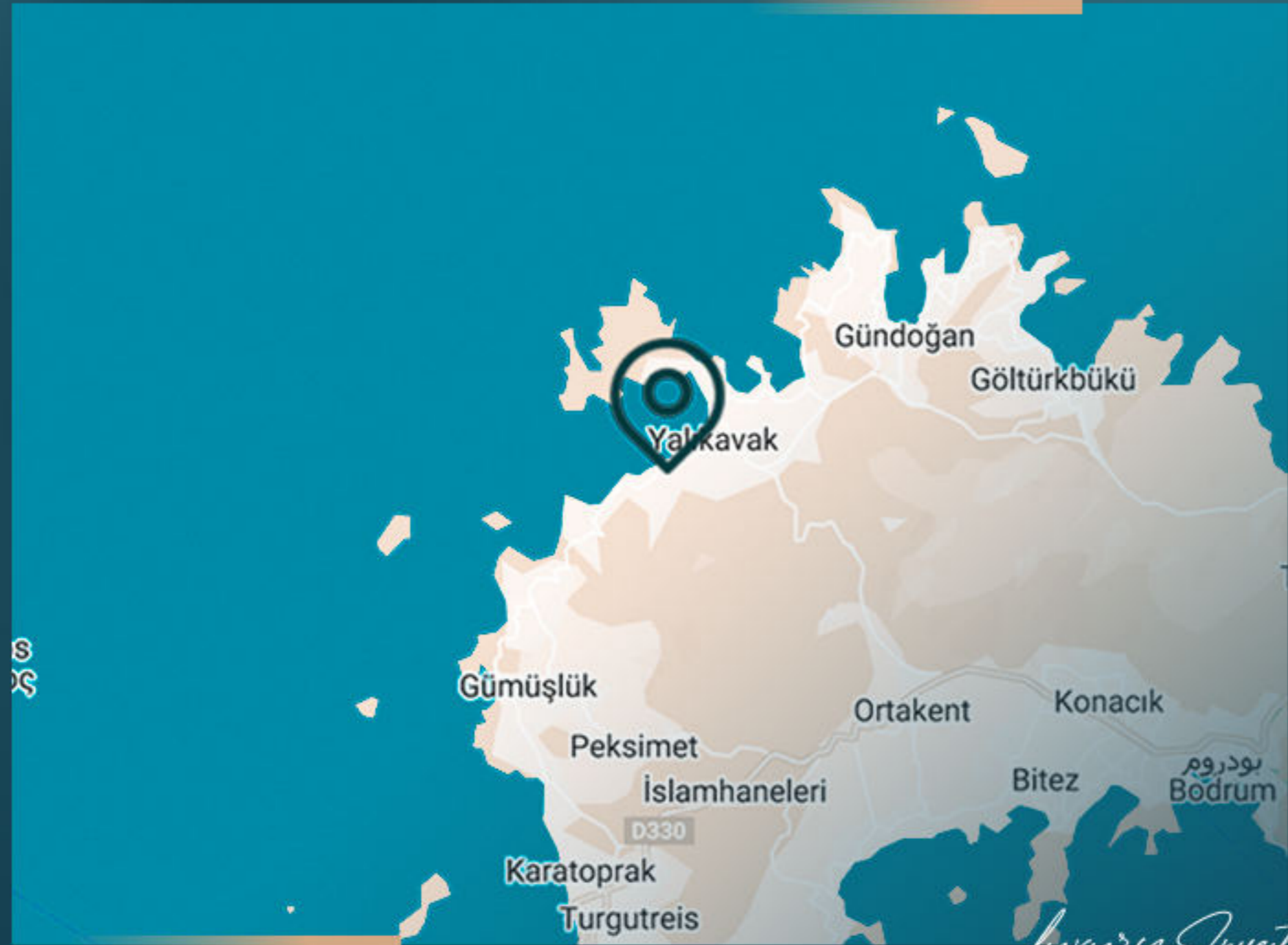
The project is putting its mark under an unlimited luxury with its seaside villas situated on a wide land of 16.270 sqm in the most beautiful spot in Bodrum.



The project is inviting you to comfort to be experienced in summer and winter, to a life with each detail scrupulously designed.

Every apartment in the project will have its 2-car park space.

PROPERTY LOCATION



- It is 2 minutes away from Yalikavak Marina
- It is 5 minutes away from the beach
- It is 15 minutes away from Midtown Mall
- It is 20 minutes away from Torba
- It is 30 minutes away from Bodrum downtown
- It is 30 minutes away from Bodrum Marina
- It is 45 minutes away from Milas Airport



Luxury Investing

PROPERTY FEATURES



Swimming Pool



Garage



Gardens



Elevator



Security

Luxury Investing



REAL ESTATE INVESTMENT

PROJECT PHOTOS

Luxury Investing



REAL ESTATE INVESTMENT
PROJECT
PHOTOS

Luxury Investing



PROJECT
PHOTOS

REAL ESTATE INVESTMENT

Luxury Investing



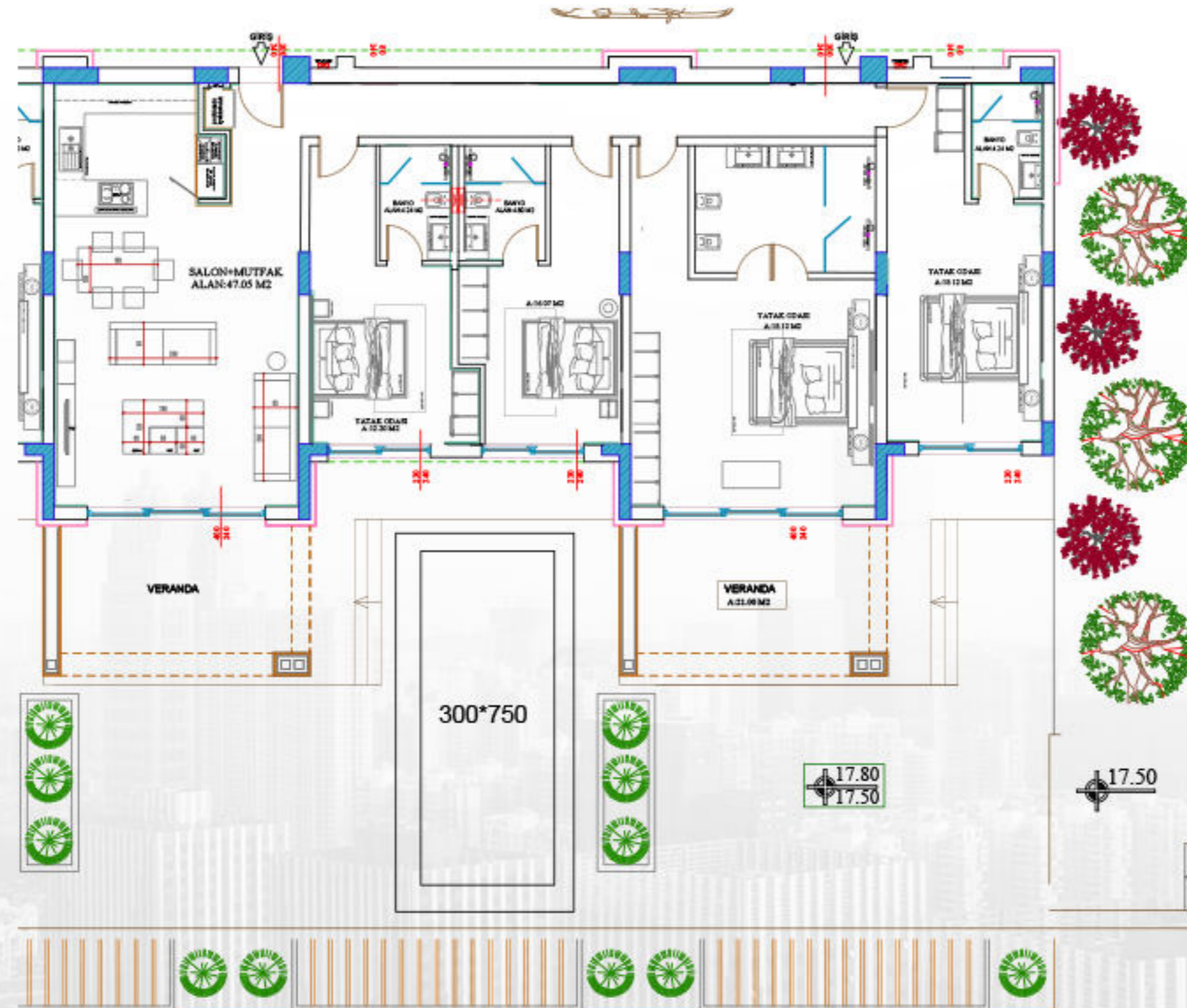
REAL ESTATE INVESTMENT

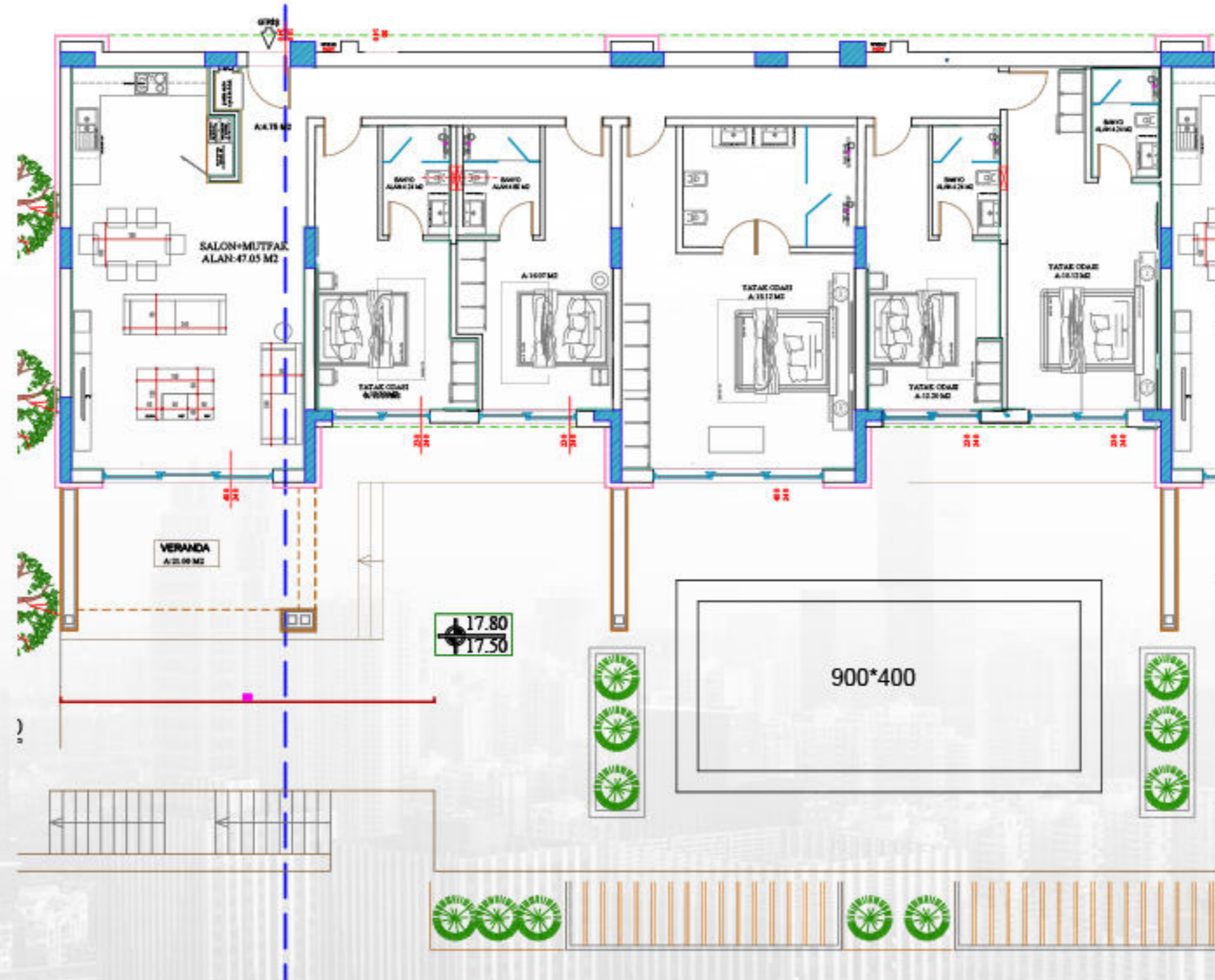
PROJECT
PHOTOS

Luxury Investing



REAL ESTATE INVESTMENT
PROJECT
PHOTOS







CONTACT
US

0 212 924 97 37
info@luxurysignature.net
www.luxurysignature.net

Skyland İstanbul, Huzur Mah.
Cendere Cad. 515/B Blok,
Sarıyer/İstanbul