



LS204

Under construction
Delivery date: 30/09/2024

Charming green apartments in Küçükçekmece

 **KÜÇÜKÇEKMECE**

REAL ESTATE INVESTMENT

LS LUXURY
SIGNATURE

Luxury living



PROPERTY DESCRIPTION

Your perspective on life will change this project, which rises on 30 acres of land, consists of 413 flats in 5 blocks in total, with its flats opening to the garden, a large and rich landscape area, reflection pools, social areas, stores, and aesthetic architecture, making a privileged life in Atakent, the shining star region of Istanbul.



Project has flat options from 1+1 to 4+1 designed for different expectations. Housing designs where naturalness comes to life take your dreams to the center, consisting of 413 flats and commercial units, invites you and your loved ones to a fairytale of happiness.

5 BLOCKS

413 FLAT

17 COMMERCIAL UNITS

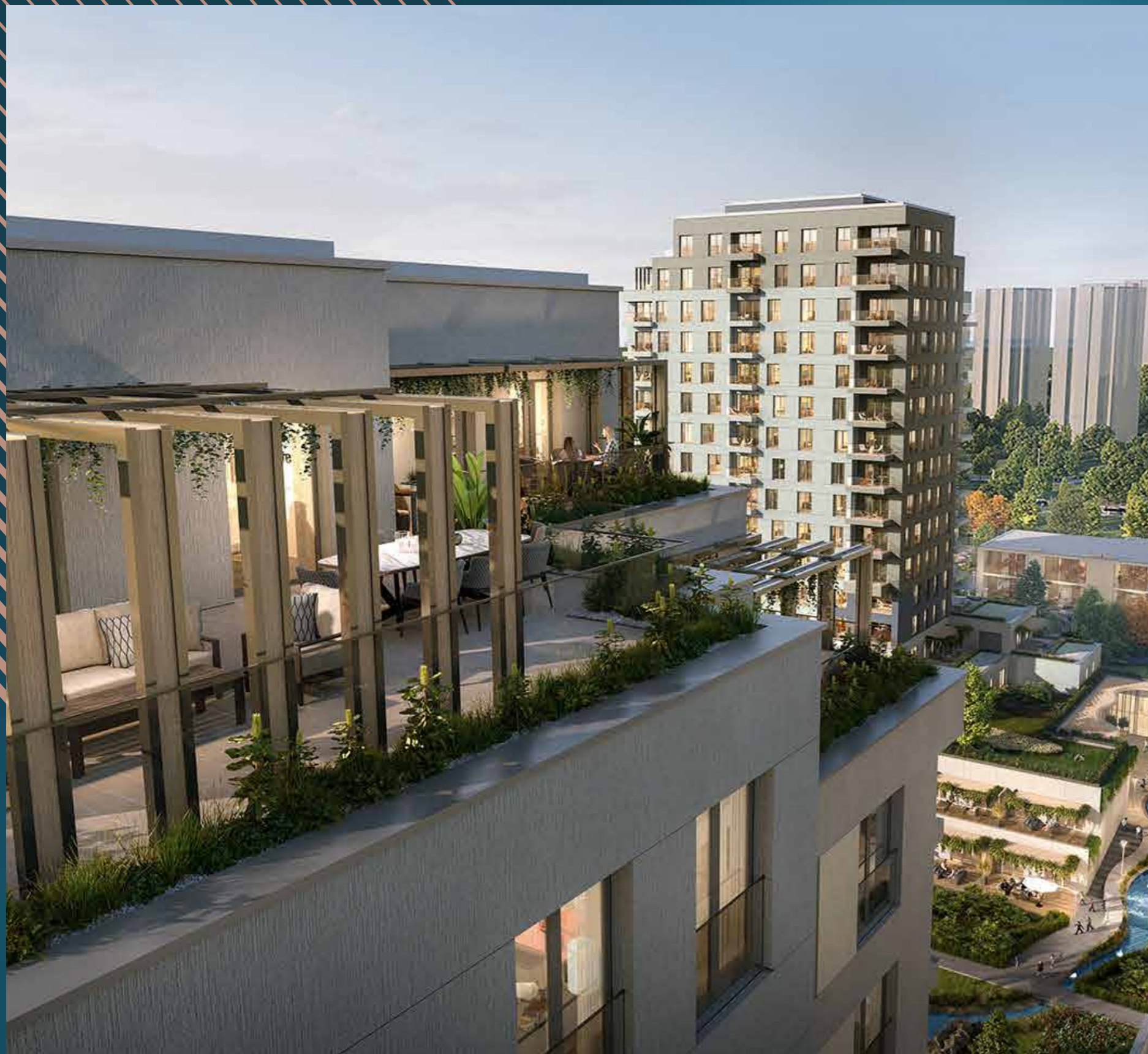
1+1 - 4+1 FLAT TYPES

74,61 m² - 211,86 m² FLAT SIZES

30.000 m² LAND AREA

100.000 m² CONSTRUCTION AREA

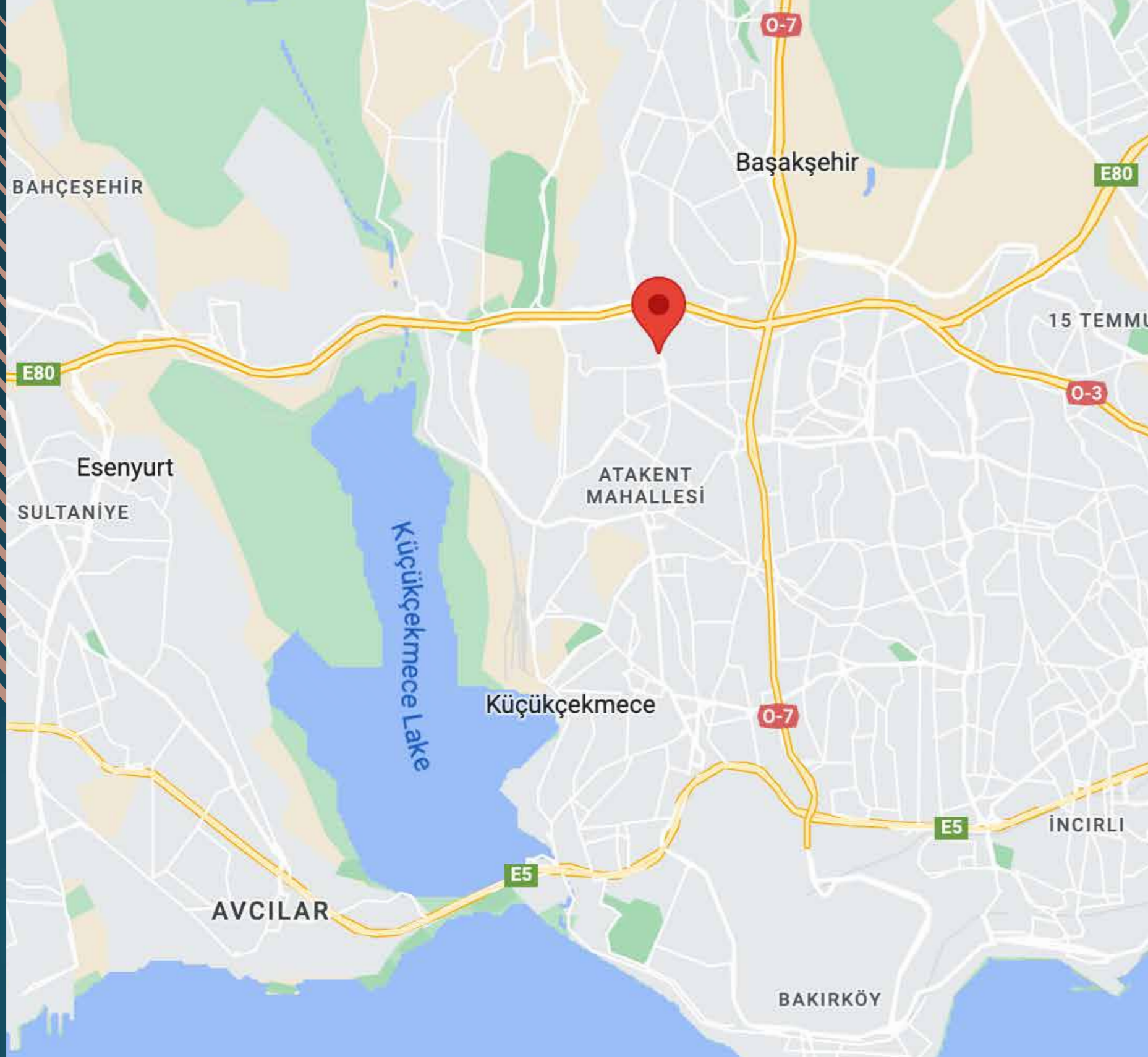
Project is located on one of the busiest streets of Atakent, within walking distance of ArenaPark, the region's beloved shopping and entertainment center. Its proximity to the E-5 and TEM highways offers great advantages to the residents of Ata. It makes it easy to reach every point of the city by public transportation or private vehicle.



Project reveals its difference in every detail and line. The harmony of modern architecture with green draws your standards to a different line. Comfort takes on a whole new dimension. Spacious halls, verandas touching green, and peaceful balconies change your perspective on life.

You always stay fit and keep in shape with the multi-purpose sports area, running and walking tracks, and basketball courts in the parking area next to you. In the social facility within the site, you are relieved of all your fatigue and stress with sports and spa facilities.

In this remarkable project, luxury and elegance will not be the only features that distinguish it, but safety and comfort will be all that the family needs. With a 24-hour security system and surveillance cameras, you can feel calm and relaxed in your home.



PROPERTY LOCATION

- It is located on Atakent Street.
- Walking distance to ArenaPark Shopping Centre. Close to E-5 and TEM highways.



PROPERTY FEATURES

- ✓ Swimming Pool
- ✓ Gardens
- ✓ Play grounds
- ✓ Gym
- ✓ Security
- ✓ Garage
- ✓ Elevator
- ✓ Sauna
- ✓ Jacouzy
- ✓ Child playground



PROPERTY PHOTOS

LS LUXURY
SIGNATURE

luxury living

REAL ESTATE INVESTMENT REAL ESTATE INVESTMENT REAL ESTATE INVESTMENT REAL ESTATE INVESTMENT



INVESTMENT REAL ESTATE INVESTMENT REAL ESTATE INVESTMENT REAL ESTATE INVESTMENT REAL ESTATE

PROPERTY PHOTOS



PROPERTY PHOTOS

LS LUXURY
SIGNATURE

luxury living



ESTATE INVESTMENT REAL ESTATE INVESTMENT REAL ESTATE INVESTMENT REAL ESTATE INVESTMENT REAL ESTATE INVESTMENT REAL ESTATE INVESTMENT

PROPERTY PHOTOS

LS LUXURY
SIGNATURE

luxury living



REAL ESTATE INVESTMENT REAL ESTATE INVESTMENT REAL ESTATE INVESTMENT REAL ESTATE INVESTMENT

PROPERTY PHOTOS

LS LUXURY SIGNATURE

luxury living



REAL ESTATE INVESTMENT REAL ESTATE INVESTMENT REAL ESTATE INVESTMENT

PROPERTY PHOTOS

LS LUXURY
SIGNATURE

luxury living



REAL ESTATE INVESTMENT REAL ESTATE INVESTMENT REAL ESTATE INVESTMENT

PROPERTY PHOTOS

1+1 E

Net Alan:

47.36 m² - 47.57 m²

Net Alan + Açık Balkon:

52.26 m² - 52.47 m²

Satışa Esas Brüt Alan:

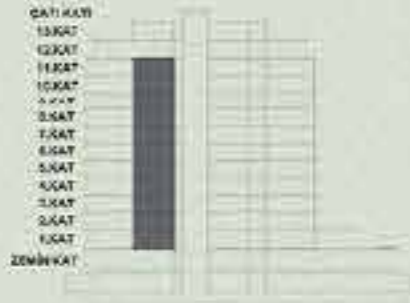
74.91 m² - 75.13 m²

ANAHTAR PLAN



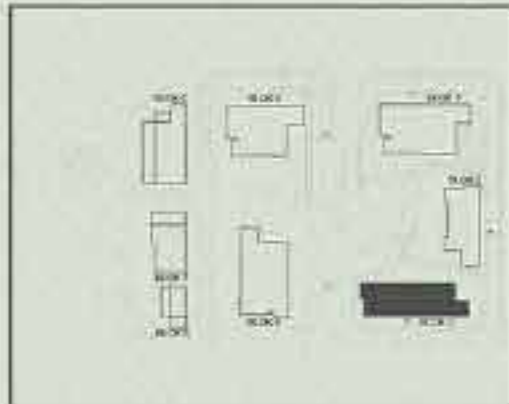
blok 3, 1-11. kat

ANAHTAR KESİT



blok 3

VAZİYET PLANI



2+1A

Net Alan:

74.45 m² - 74.61 m²

Net Alan + Açık Balkon:

80.62 m² - 80.78 m²

Satışa Esas Brüt Alan:

114.37 m² - 116.64 m²

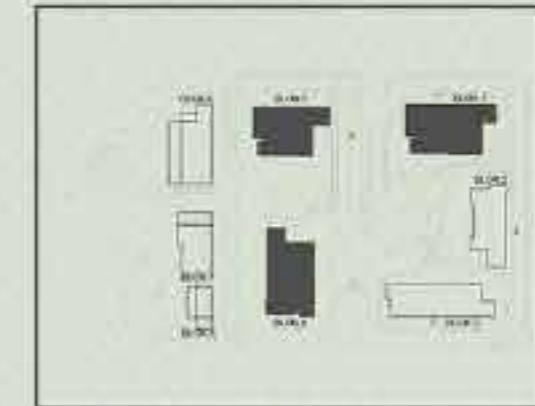
ANAHTAR PLAN



ANAHTAR KESİT



VAZİYET PLANI



Özellik alanlar dairenin bulunduğu blok ve kata göre alt yapıdan kaynaklanan farklılıklar gözelebilir. Yönlendirici projenin uygulaması sırasında teknik açıdan gerekli gördüğü değişiklikler yapma hakkına sahiptir. Daha ayrıntılı örnek olarak yapımcı, blok ve daireler hakkında değişiklik gösterebilir.

3+1 B

Net Alan:

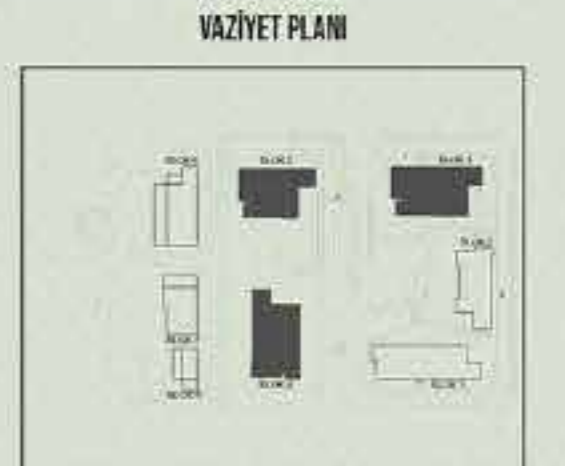
105.06 - 106.02 m²

Net Alan + Açık Balkon:

113.83 - 114.98 m²

Satışa Esas Brüt Alan:

164.13 - 167.86 m²



Dış cephe kaplama malzemesi, içi lamba, tuvalet blok ve kasa göre alt yapıdır. Ayrıntı için farklılıklar gösterebilir. Yıkıcı projenin uygulanması sırasında teknik açılar gerektirdiği için, işleri yapma hakkına sahiptir. Dış cephe kaplama malzemesi, içi lamba, tuvalet blok ve kasa göre alt yapıdır. Ayrıntı için farklılıklar gösterebilir.

Luxury Signature

4+1 A

Net Alan:

135.90 m² - 136.39 m²

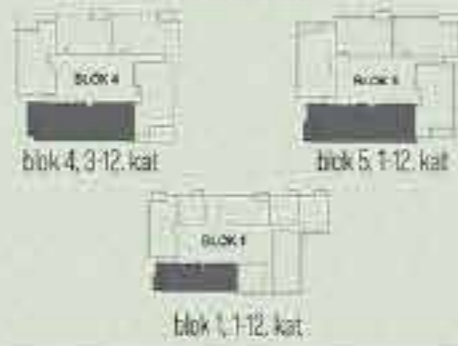
Net Alan + Açık Balkon:

144.42 m² - 144.78 m²

Satışa Esas Brüt Alan:

208.02 m² - 211.86 m²

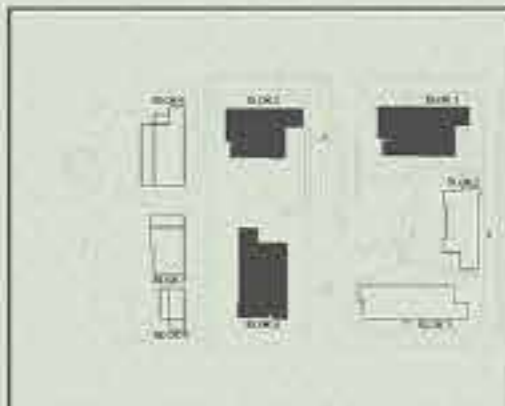
ANAHTAR PLAN



ANAHTAR KESİT



VAZİYET PLANI



Dinamik planlar dairesinin her lütfüğü blok ve kote göre alt yapıdır. Ayrıntıların farklılıklar gösterebilir. Yıkıcı projenin uygulanması sırasında teknik açılar gerekli gördüğü diğer ölçümler yapıma halden alınacaktır. Dda çatıların diğer alanlar yapılmış olup, bloklar ve diğerler arasında değişiklik gösterebilir.

Arçelik İnşaat



CONTACT
US

0 212 924 97 37
info@luxurysignature.net
www.luxurysignature.net

Skyland İstanbul, Huzur Mah.
Cendere Cad. 515/B Blok,
Sarıyer/İstanbul