



LS323: INVESTMENT APARTMENTS  
CLOSE TO BELGRAD FOREST IN  
ISTANBUL

Eyup, Istanbul

**LS** LUXURY  
SIGNATURE

*Luxury Investing*

REAL ESTATE INVESTMENT



*Luxury Investing*

## PROPERTY DESCRIPTION

It is a family oriented investment project that took its place in the growing area of Gokturk, on the European side of Istanbul.

The project has a total land area of 11.891 square meters and green space area of 7.953 square meters.



*Luxury Investing*

This project consists of 5 blocks that contain 141 apartments, with different types, ranging from 1 bedroom to 4 bedrooms with balcony, terrace and garden.

%65 of the project area is green area and social facilities, which include outdoor swimming pool, gym, sauna and steam room, games and playstation room, cafeteria, sunbathing area, walking path, basketball court, children's playground, barbecue area, and storage area.

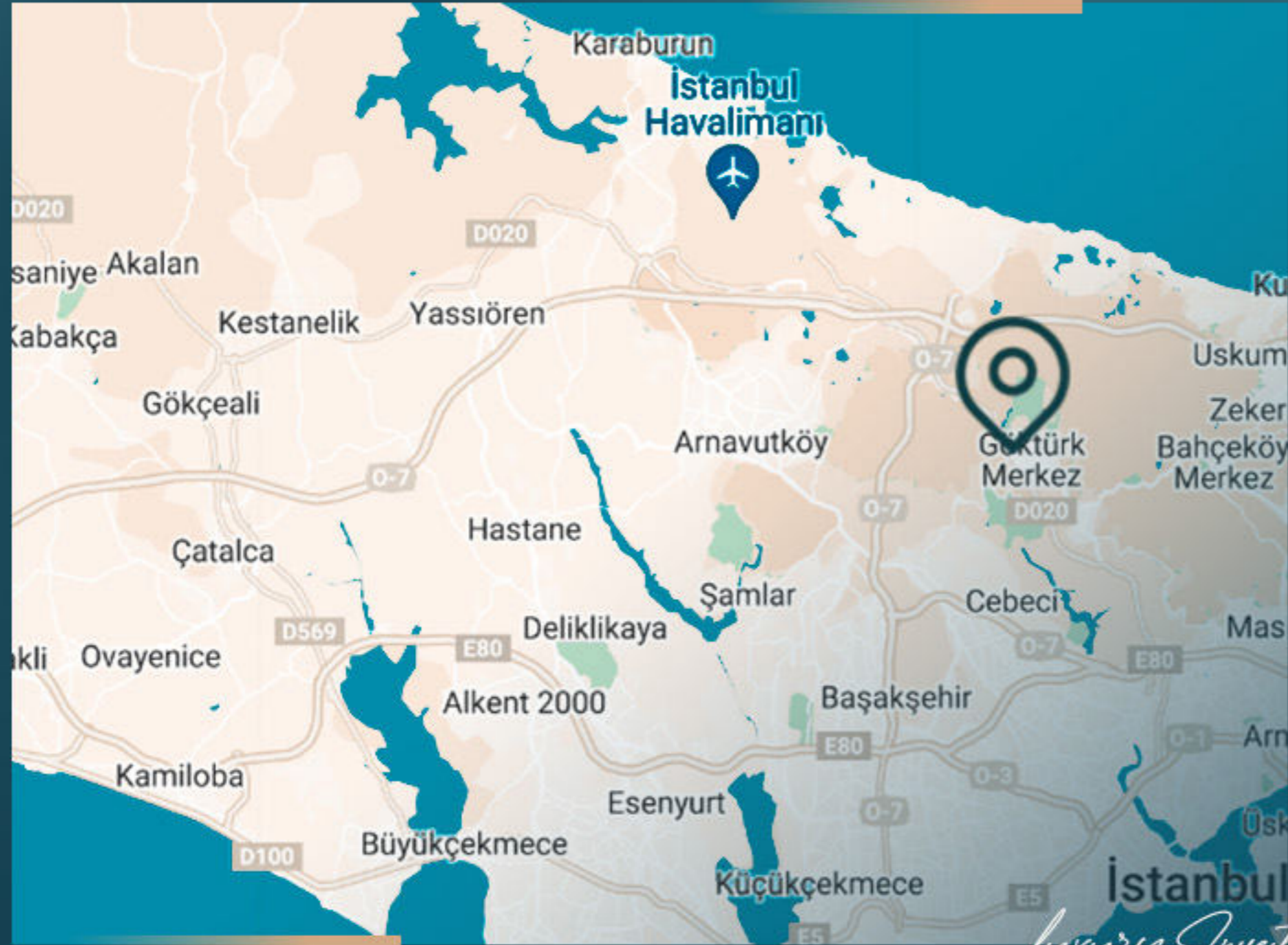


*Luxury Investing*

The apartments in the project have a view of forest, landscape or the city.

The project is under construction, and it will be ready and delivered in April 2026.

The project is suitable for obtaining Turkish citizenship.



*Luxury Investing*

## PROPERTY LOCATION

- It is 4 minutes away from Belgrad Forest
- It is 4 minutes away from Gokturk Nature Park
- It is 5 minutes away from Kemer Country Golf Club
- It is 5 minutes away from the M11 metro
- It is 5 minutes away from private schools
- It is 6 minutes away from hospitals
- It is 7 minutes away from Kemerborgaz Forest
- It is 10 minutes away from Istanbul Airport
- It is 15 minutes away from Levent
- It is 15 minutes away from Maslak



*Luxury Investing*

# PROPERTY FEATURES



Gardens



Gym



Security



Garage



Elevator



Sauna



Turk Hamam



Swimming Pool

*Luxury Investing*



# PROJECT PHOTOS

REAL ESTATE INVESTMENT

*Luxury Investing*



PROJECT  
PHOTOS

REAL ESTATE INVESTMENT



*Luxury Investing*



# PROJECT PHOTOS

REAL ESTATE INVESTMENT



PROJECT  
PHOTOS

REAL ESTATE INVESTMENT

*Luxury Investing*



PROJECT  
PHOTOS

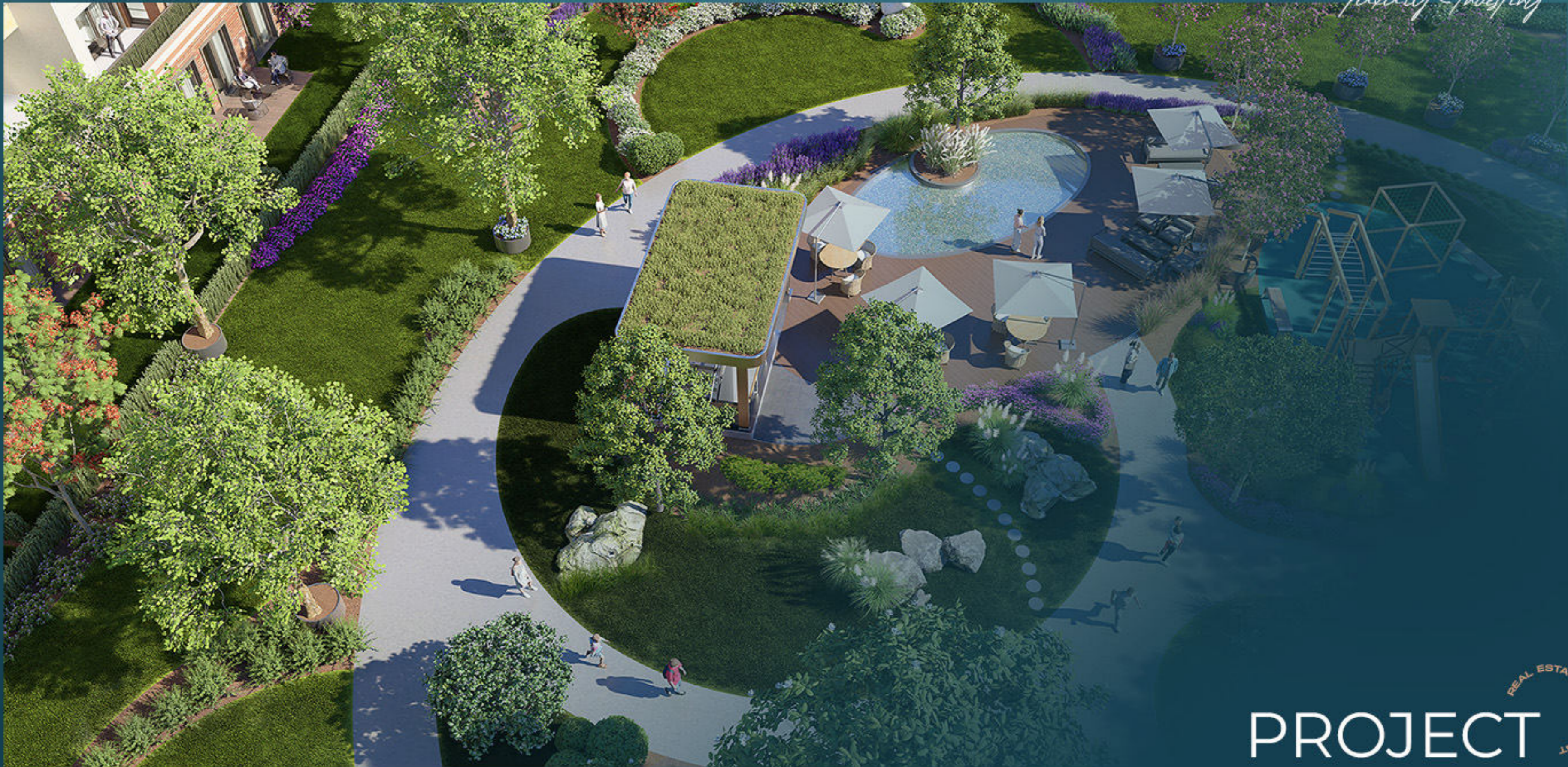
REAL ESTATE INVESTMENT



# PROJECT PHOTOS

REAL ESTATE INVESTMENT

*Luxury Investing*



# PROJECT PHOTOS

REAL ESTATE INVESTMENT



CONTACT  
US

0 212 924 97 37  
info@luxurysignature.net  
www.luxurysignature.net

Skyland İstanbul, Huzur Mah.  
Cendere Cad. 515/B Blok,  
Sarıyer/İstanbul