



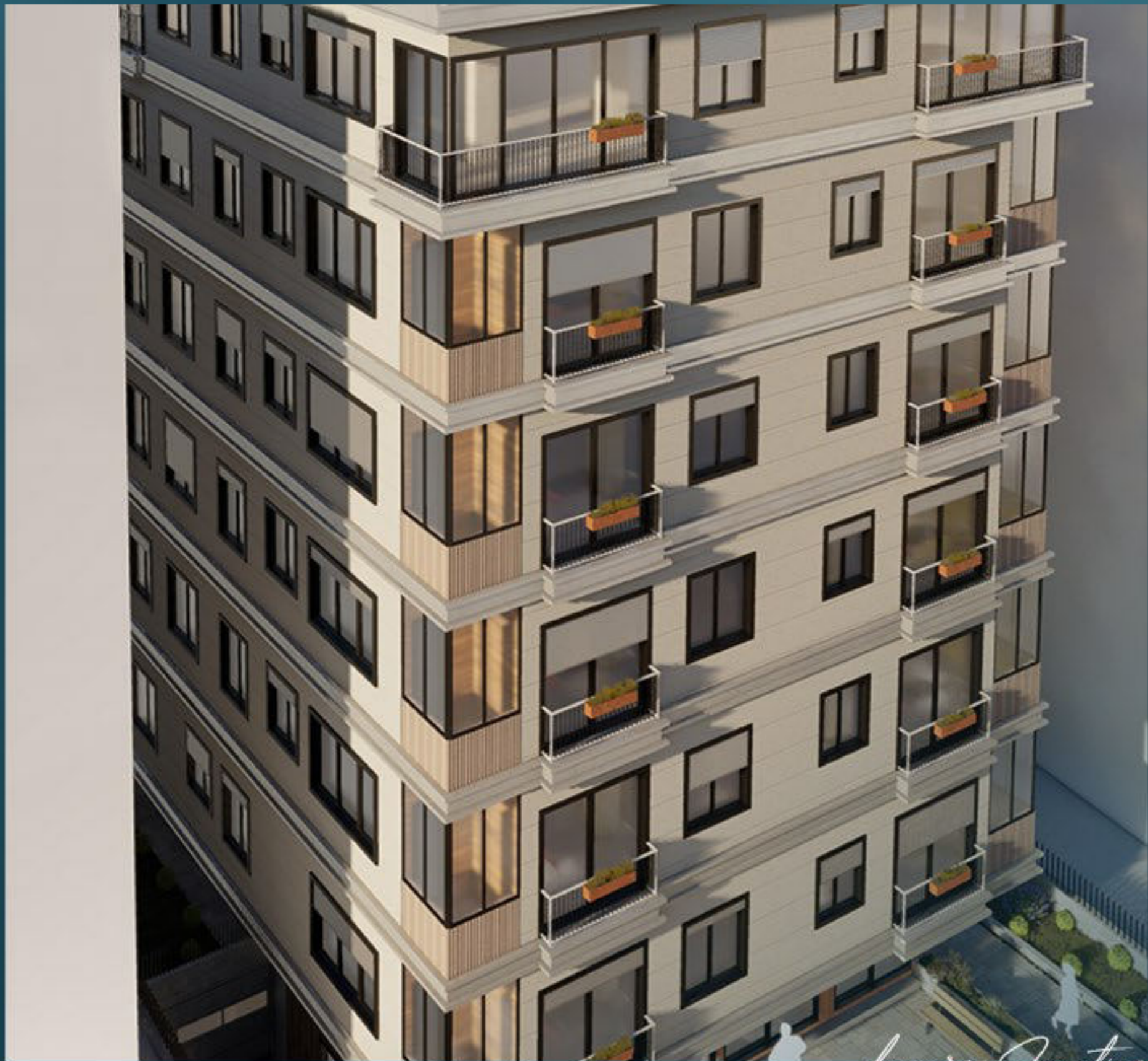
LS354: APARTMENTS FOR SALE
UNDER CONSTRUCTION IN THE
DISTRICT OF BESIKTAS

Besiktas, Istanbul

REAL ESTATE INVESTMENT

LS LUXURY
SIGNATURE

Luxury Investing



Luxury Investing

PROPERTY DESCRIPTION

New residential and investment apartments are being raised in the most central and prestigious district of Besiktas in Istanbul.

This project stands out as an excellent investment opportunity in real estate near the Bosphorus.

It features modern apartments for sale in the central Besiktas district of Istanbul.



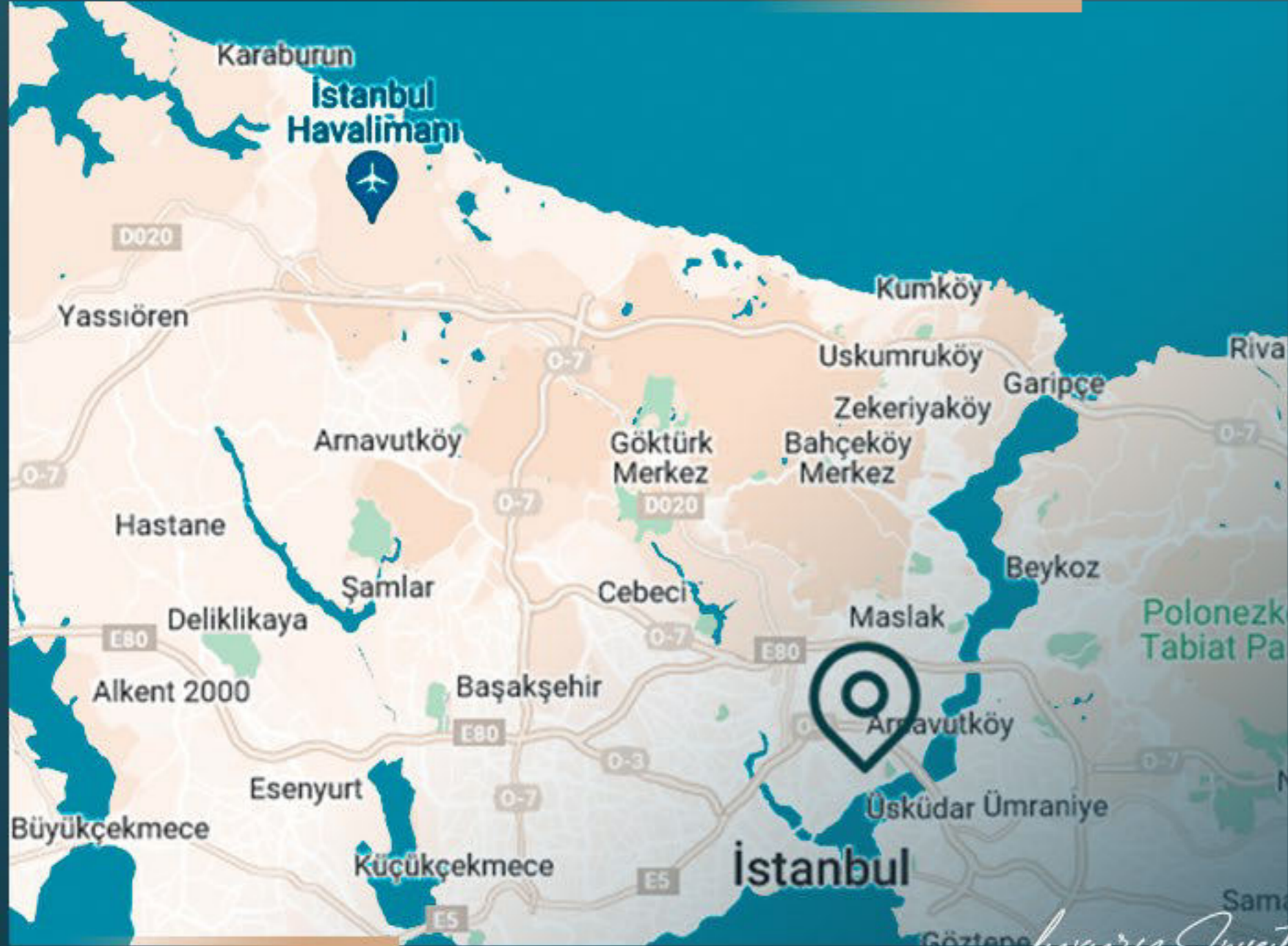
Luxury Investing

The project's key advantage is its prime location, being close to Dolmabahce Palace, Nisantasi Street, Zorlu Center, and the Bosphorus Bridge.

The project has 36 apartments of the types ,1+1 1+3 ,1+2 duplex and 1+4 duplex.

The project offers for its residents a private parking space, in addition to the security services 7/24.

The project is suitable for obtaining Turkish citizenship and residence permit.

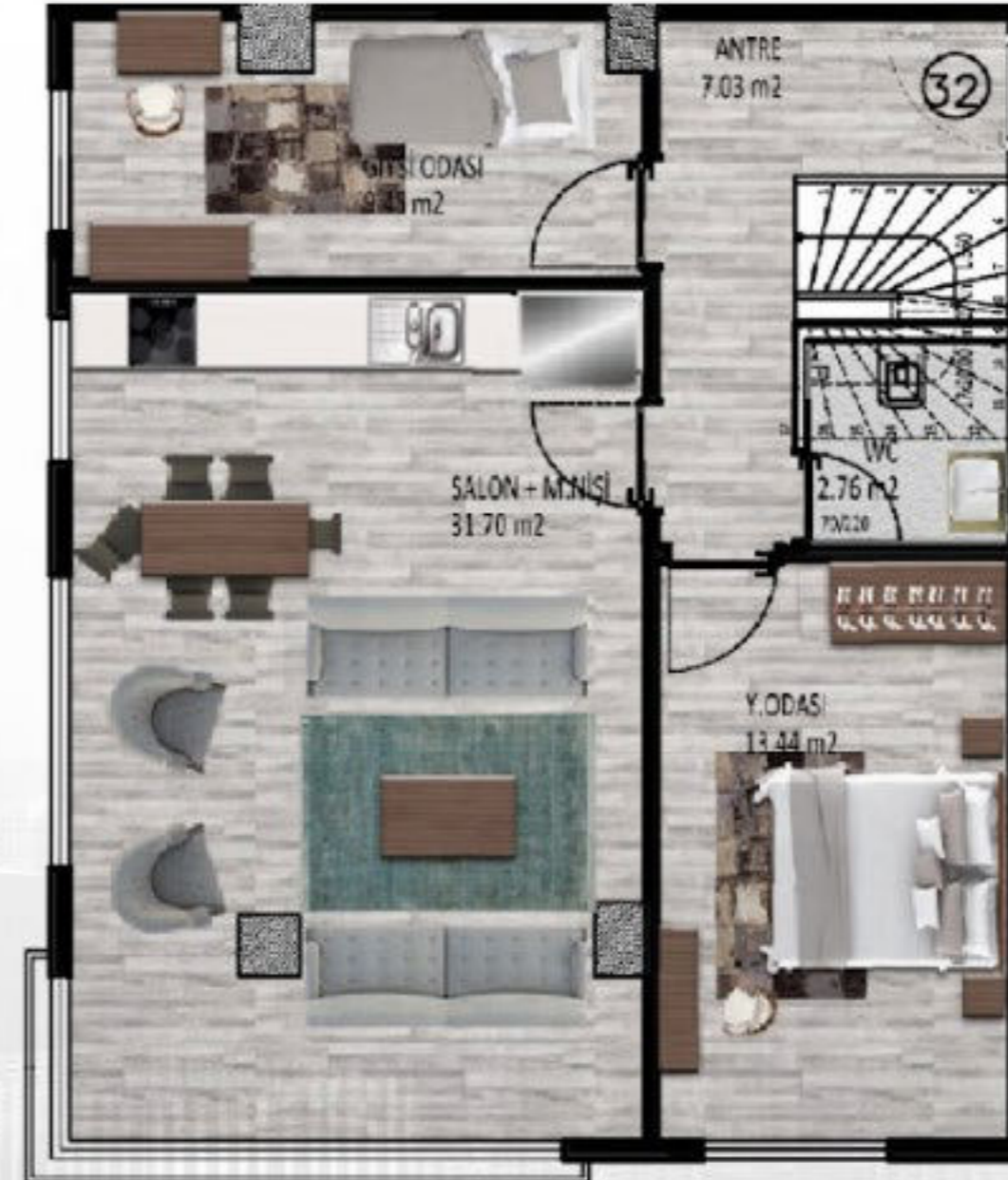
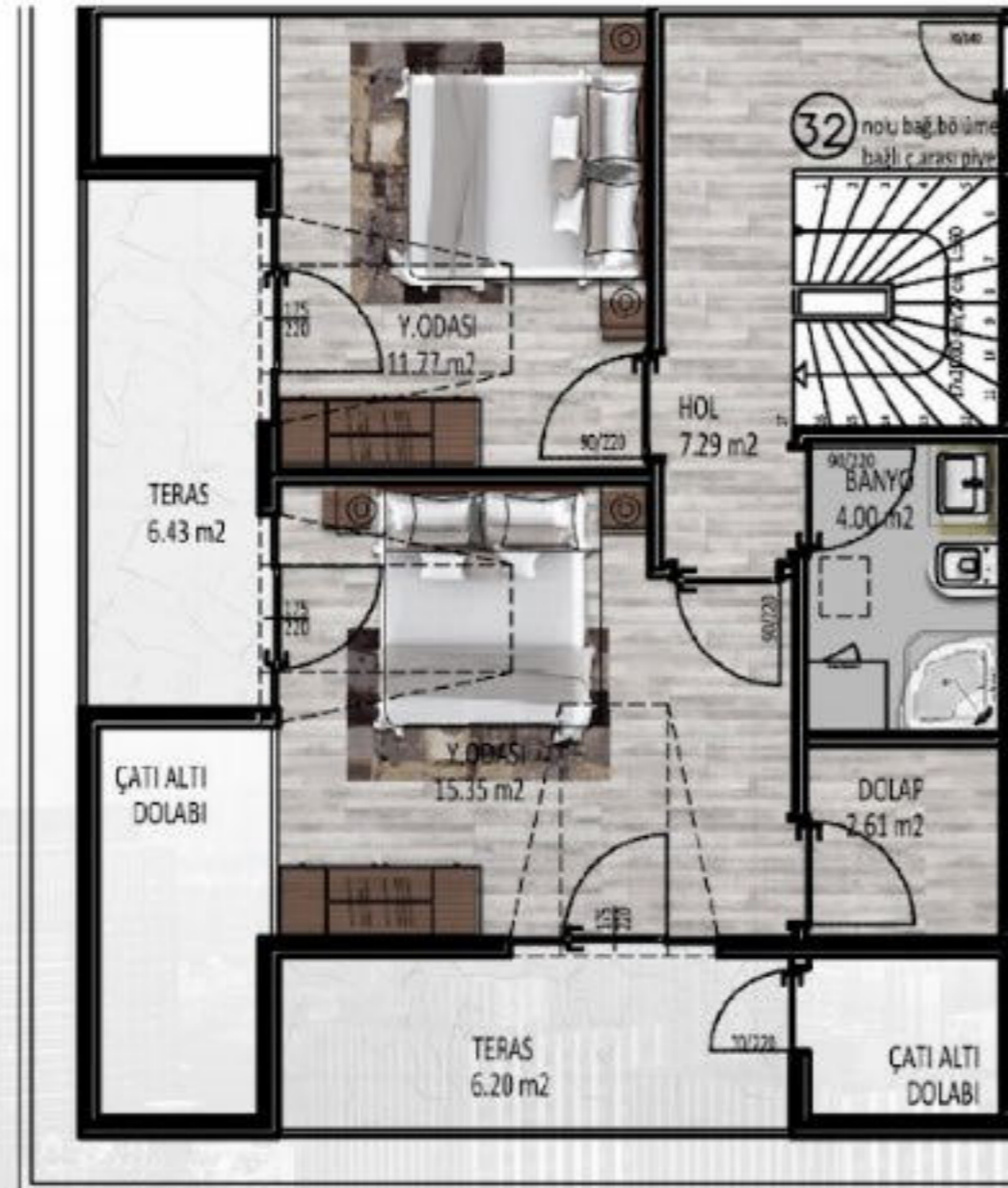


PROPERTY LOCATION

- It is 5 minutes away from Ortakoy
- It is 5 minutes away from the Bosphorus Bridge
- It is 5 minutes away from Zorlu Center
- It is 5 minutes away from Nisantasi
- It is 10 minutes away from Taksim Square
- It is 10 minutes away from Dolmabahce Palace
- It is 10 minutes away from Bahcesehir University



4+1 Duplex





CONTACT
US

0 212 924 97 37
info@luxurysignature.net
www.luxurysignature.net

Skyland İstanbul, Huzur Mah.
Cendere Cad. 515/B Blok,
Sarıyer/İstanbul