



LS293: COMMERCIAL PROJECT
AND WAREHOUSES NEAR THE
PORT IN ISTANBUL

Avcilar, Istanbul

LS LUXURY
SIGNATURE

Luxury Investing

REAL ESTATE INVESTMENT



Luxury Investing

PROPERTY DESCRIPTION

This project is the leading name in urban development and represents the new vision of architecture. It will be the new trade center with its architecture, interior design and offices. It is suitable for retailers who have warehouses, in addition to the advantage of its proximity to the transportation network.



Luxury Investing

The project is only 4 kilometers away (5 minutes) from the port of Ambarli. While being so close to the port benefits import and export businesses, getting warehouse and office facilities in the same structure reduces both money and time.

The land area of the project is 3.200 sqm, and it offers apartment types of 1+1, 2+1 and 3+1, in addition to offices.



Luxury Investing

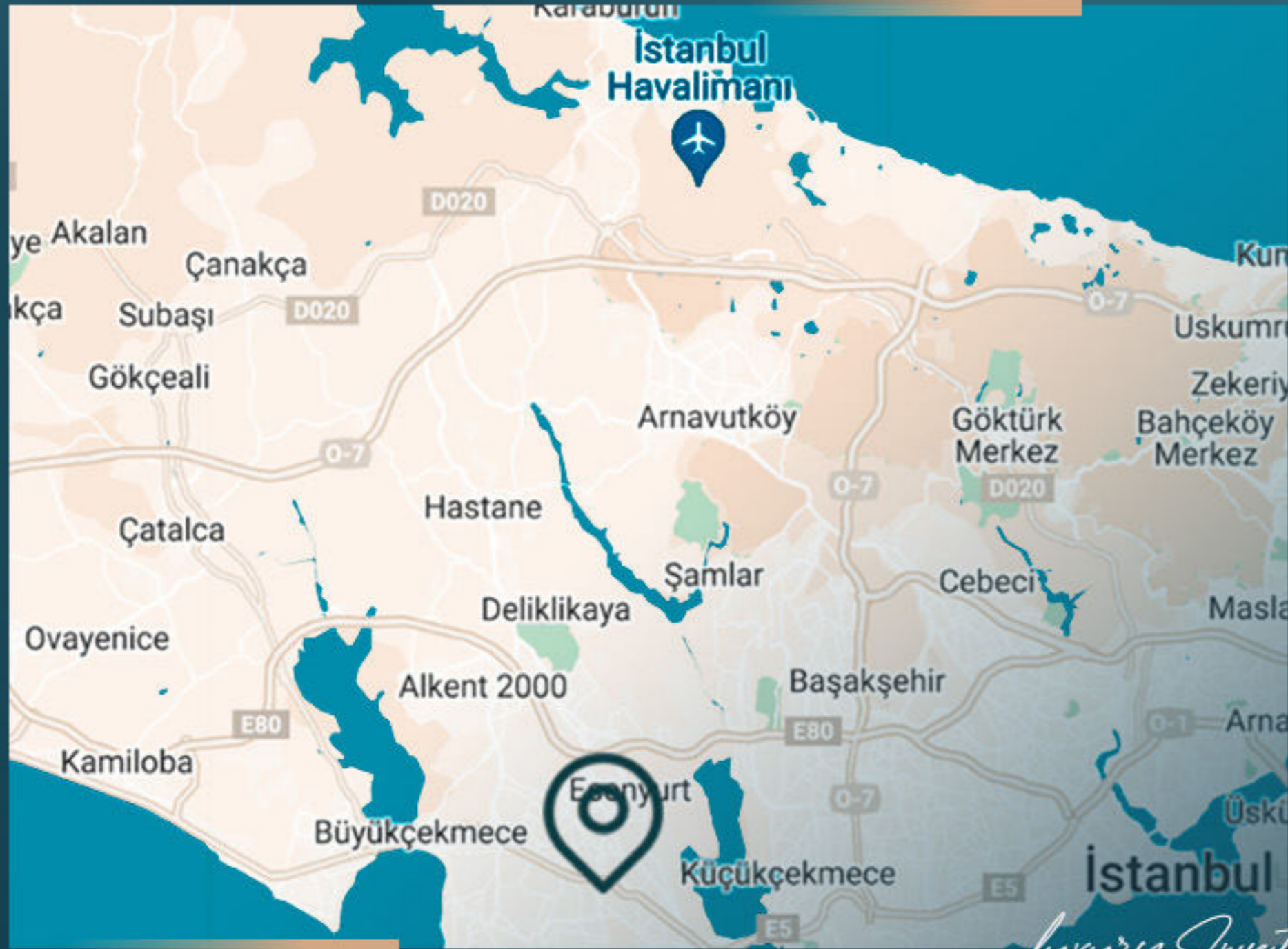
The project includes 35 apartments in total, and it offers sea and city views.

The project is characterized by the high ceiling of the apartments.

The project is located in Avcilar district on the European side of Istanbul.

The project is under-construction and it will be delivered by the end of 2024.

The title deed is ready and the project is suitable for Turkish citizenship.



Luxury Investing

PROPERTY LOCATION

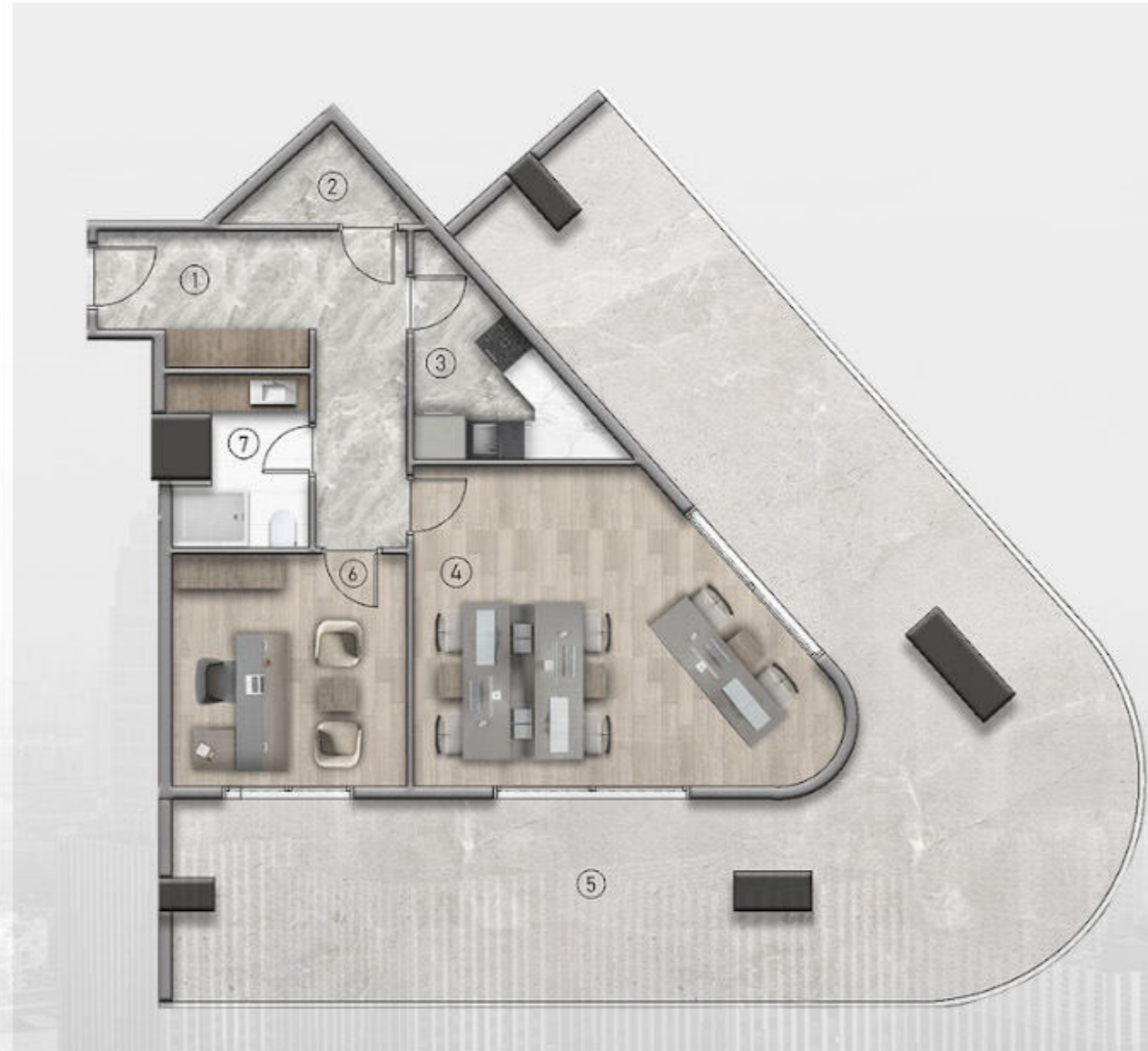
- It is 3 minutes away from schools
- It is 3 minutes away from E5 highway
- It is 4 minutes away from hospitals
- It is 4 minutes away from Avcilar Coast
- It is 5 minutes away from universities
- It is 5 minutes away from the metrobus
- It is 7 minutes away from Torium Mall
- It is 9 minutes away from Pelican Mall
- It is 10 minutes away from Marmara Park Mall
- It is 10 minutes away from Beylikduzu
- It is 20 minutes away from Florya

Luxury Investing



PROJECT
PHOTOS

REAL ESTATE INVESTMENT









CONTACT
US

0 212 924 97 37
info@luxurysignature.net
www.luxurysignature.net

Skyland İstanbul, Huzur Mah.
Cendere Cad. 515/B Blok,
Sarıyer/İstanbul