



LS180: INVESTMENT APARTMENTS
NEAR SABIHA AIRPORT
SUITABLE FOR FAMILIES
Istanbul, Pendik

LS LUXURY
SIGNATURE

Luxury Investing

REAL ESTATE INVESTMENT



Luxury Investing

PROPERTY DESCRIPTION

The project is located in Pendik district, on the Asian side of Istanbul.

The project is under-construction, and it will be ready in 6/2024.

There are 4 parking spaces for villas, and 2 parking spaces for each apartment on the project.



Luxury Investing

The project has a land area of 13.000 sqm, and 65% of the project is dedicated to green areas.

This project consists of 5 blocks that contain 114 apartments and 9 villas.

Each block in the project consists of 5 floors, and there are 4 apartments on each floor.

The apartment types offered by this project are 3+1, 4+1 and 5+1 villas.

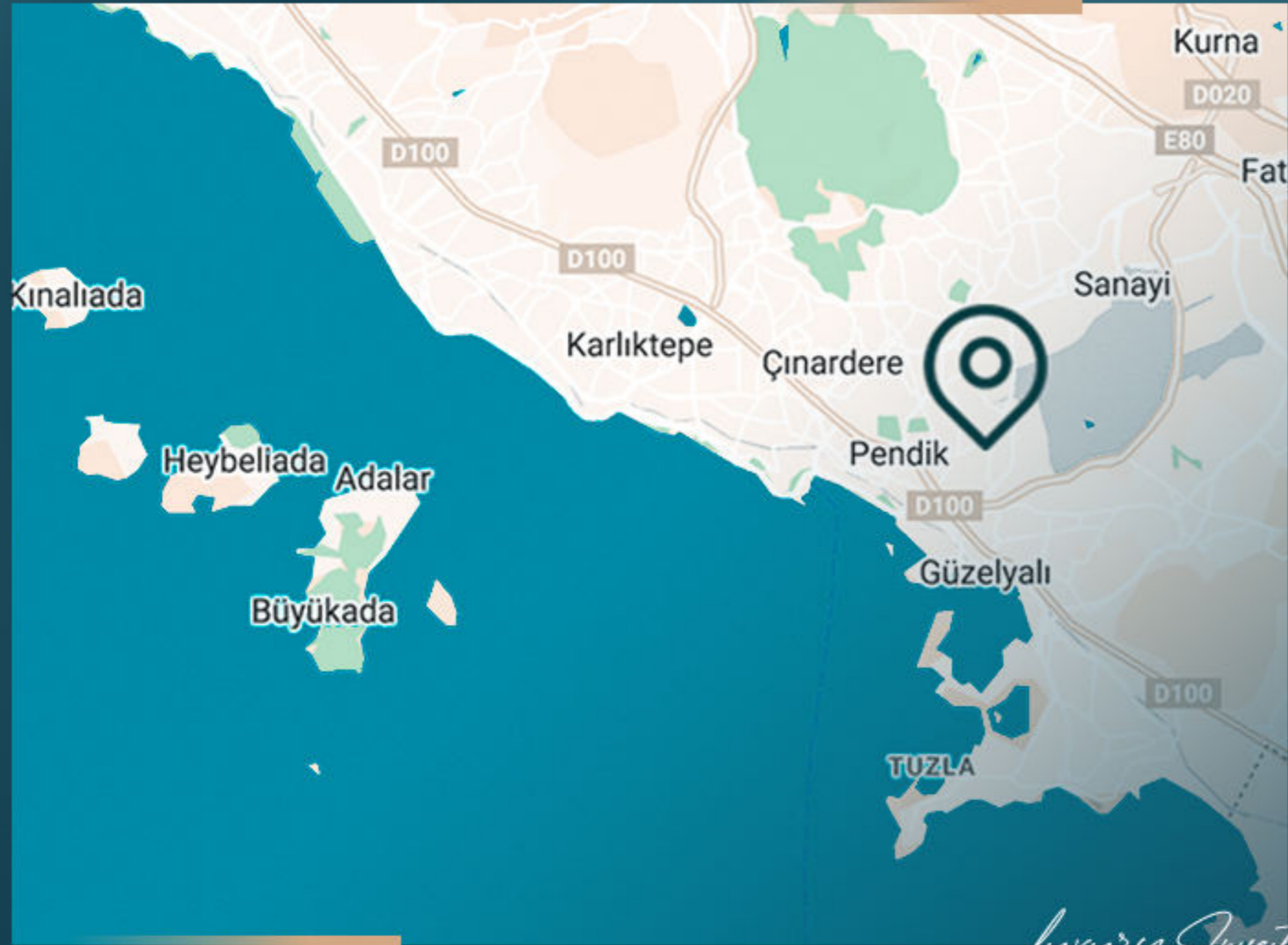


Luxury Investing

The project is suitable for families, and it includes many social facilities and amenities, such as library and meeting rooms, sauna, steam rooms, indoor swimming pool, gym, and multifunctional sport courts.

All apartments in the project offered with a base for central vacuum system. Also, the apartments offered a stove, oven and hood, and it has a floor heating system.

REAL ESTATE INVESTMENT



Luxury Investing

PROPERTY LOCATION

- It is 5 minutes away from the bus stop
- It is 15 minutes away from the metro
- It is 6 minutes away from Sabiha Airport
- It is 5 minutes away from E5 highway
- It is 6 minutes away from TEM highway
- It is 10 minutes away from Viaport Marina Mall
- It is 5 minutes away from schools and universities



Luxury Investing

PROPERTY FEATURES



Swimming Pool



Garage



Gardens



Elevator



Gym



Sauna



Security



Turk Hamam



PROJECT
PHOTOS

REAL ESTATE INVESTMENT



PROJECT
PHOTOS

REAL ESTATE INVESTMENT



REAL ESTATE INVESTMENT

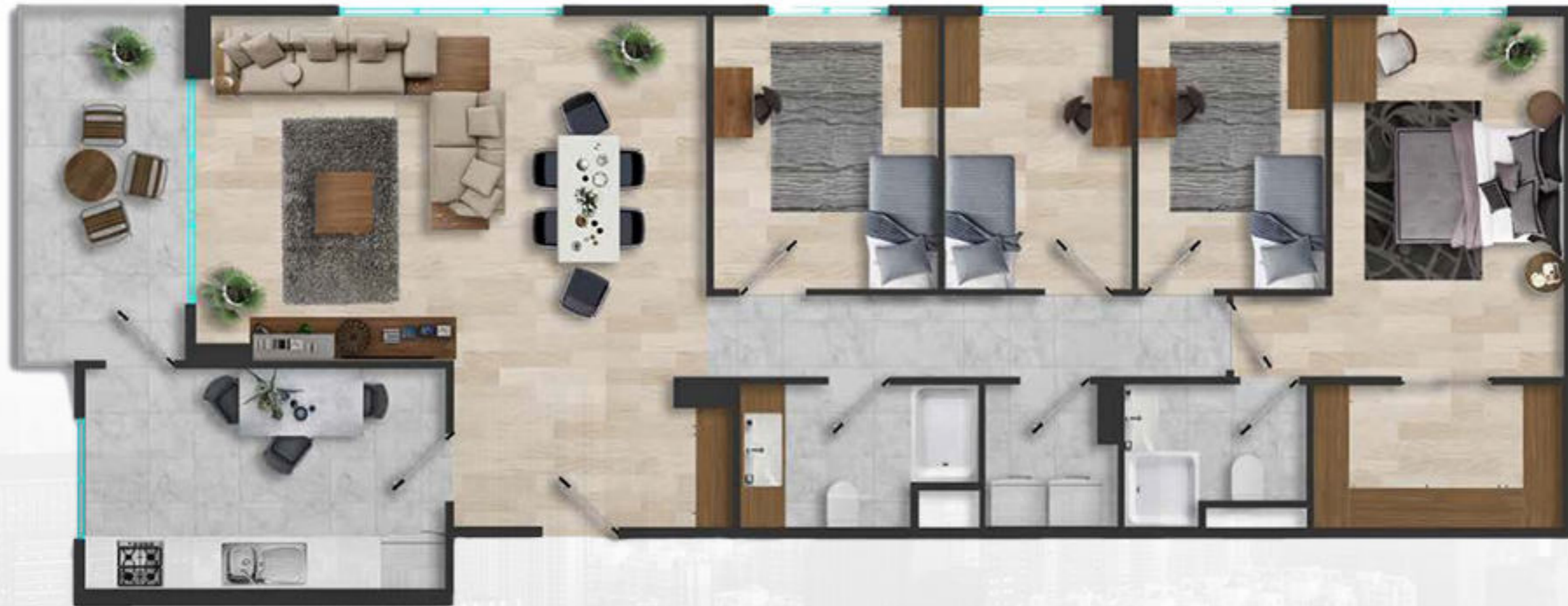
PROJECT PHOTOS

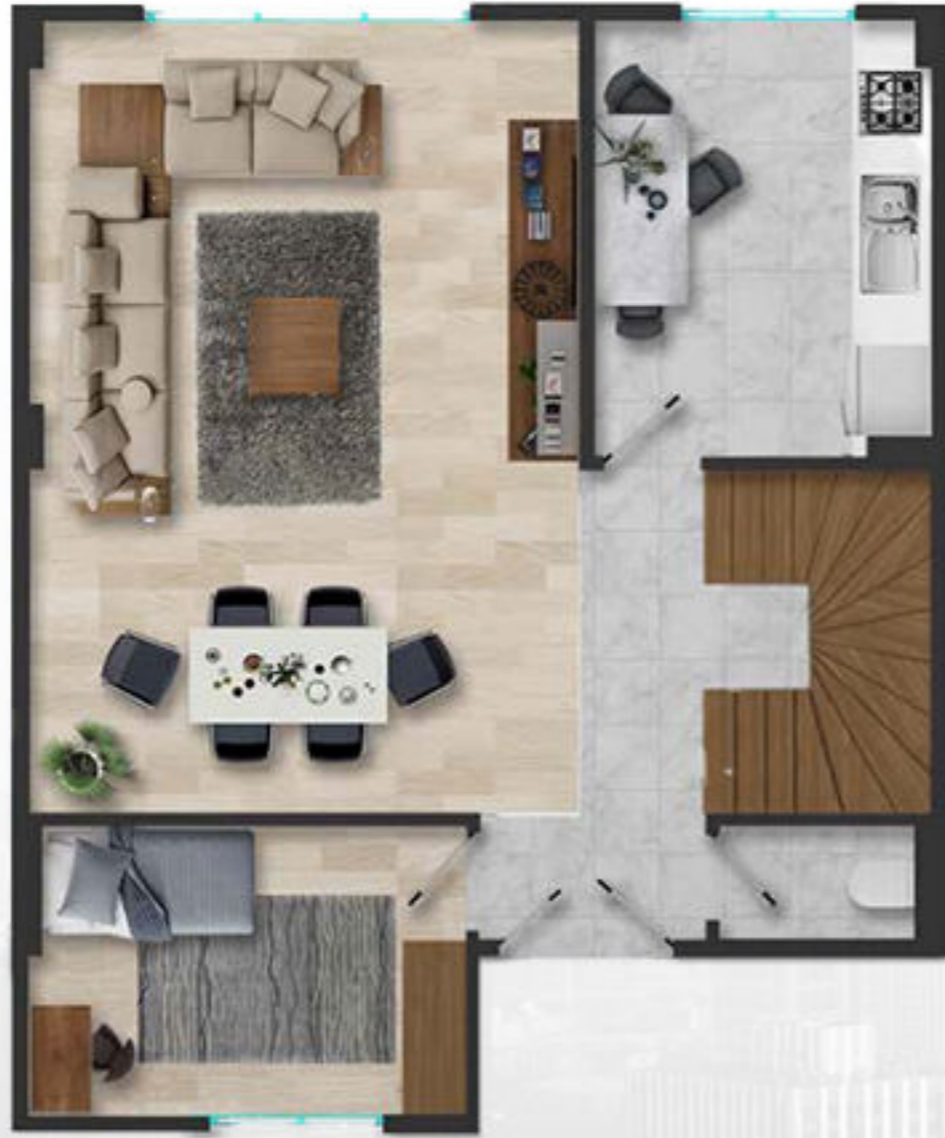


REAL ESTATE INVESTMENT

PROJECT PHOTOS









CONTACT
US

0 212 924 97 37
info@luxurysignature.net
www.luxurysignature.net

Skyland İstanbul, Huzur Mah.
Cendere Cad. 515/B Blok,
Sarıyer/İstanbul