



LS210

Investment  
apartments in  
the heart of  
Istanbul Etiler

 **ISTANBUL, ETILER**

*Luxury living*

**LS** LUXURY  
SIGNATURE

REAL ESTATE INVESTMENT



# PROPERTY DESCRIPTION

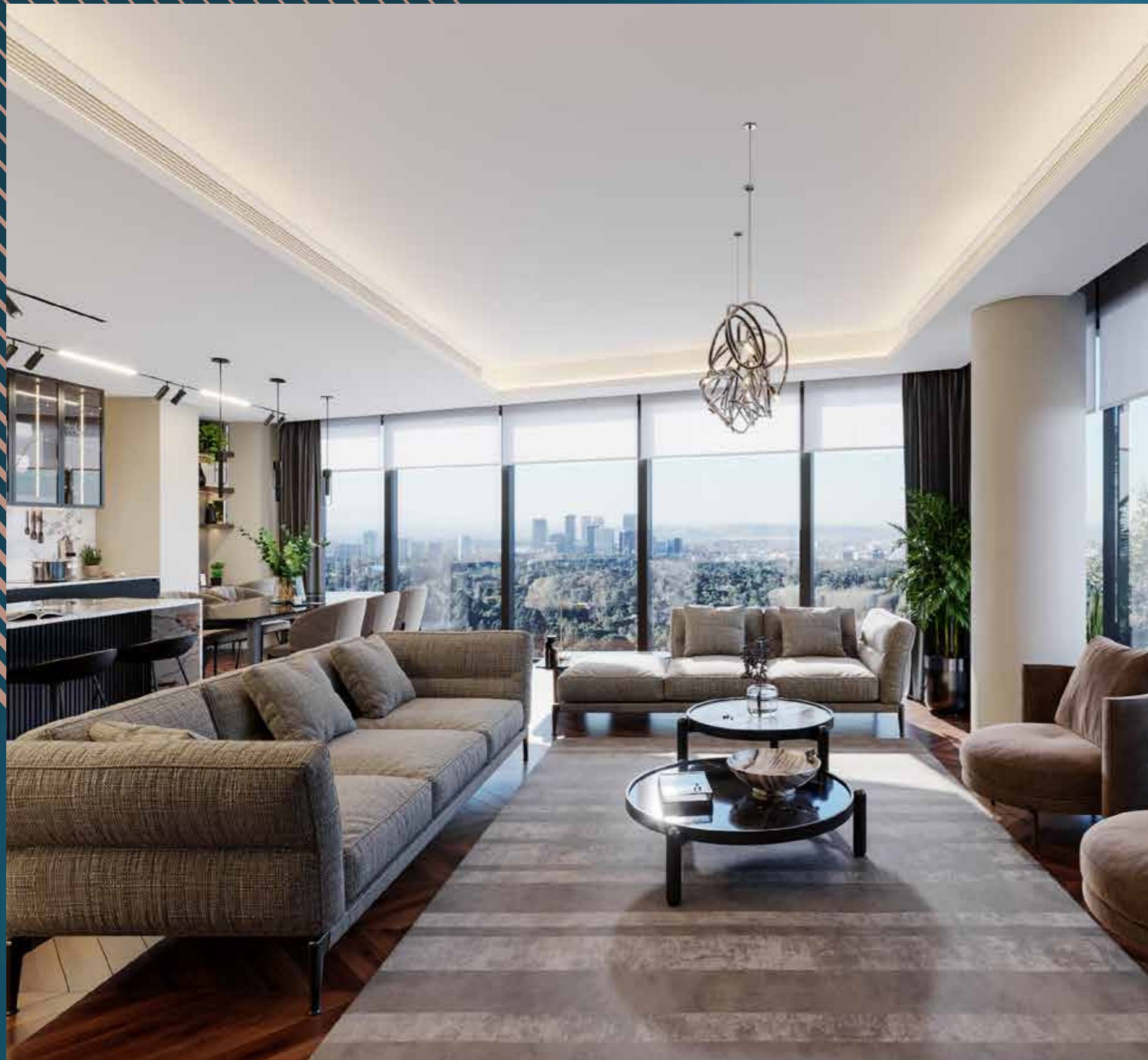
New investment growing in Etiler

Nestled in the heart of Istanbul, the Etiler district beckons you to experience truly immersive and authentic city life. This exquisite new project perfectly marries the pulse of urban living with the serenity of nature, all while offering unparalleled convenience. With its prime location, close proximity to essential amenities, and a range of housing options, it's time to embark on a new journey in Etiler.



The meticulously designed architecture not only reflects contemporary aesthetics but also emphasizes a sense of calm and relaxation. The green spaces seamlessly blend into the urban fabric, creating an environment that fosters a soothing retreat from the city's hustle and bustle.

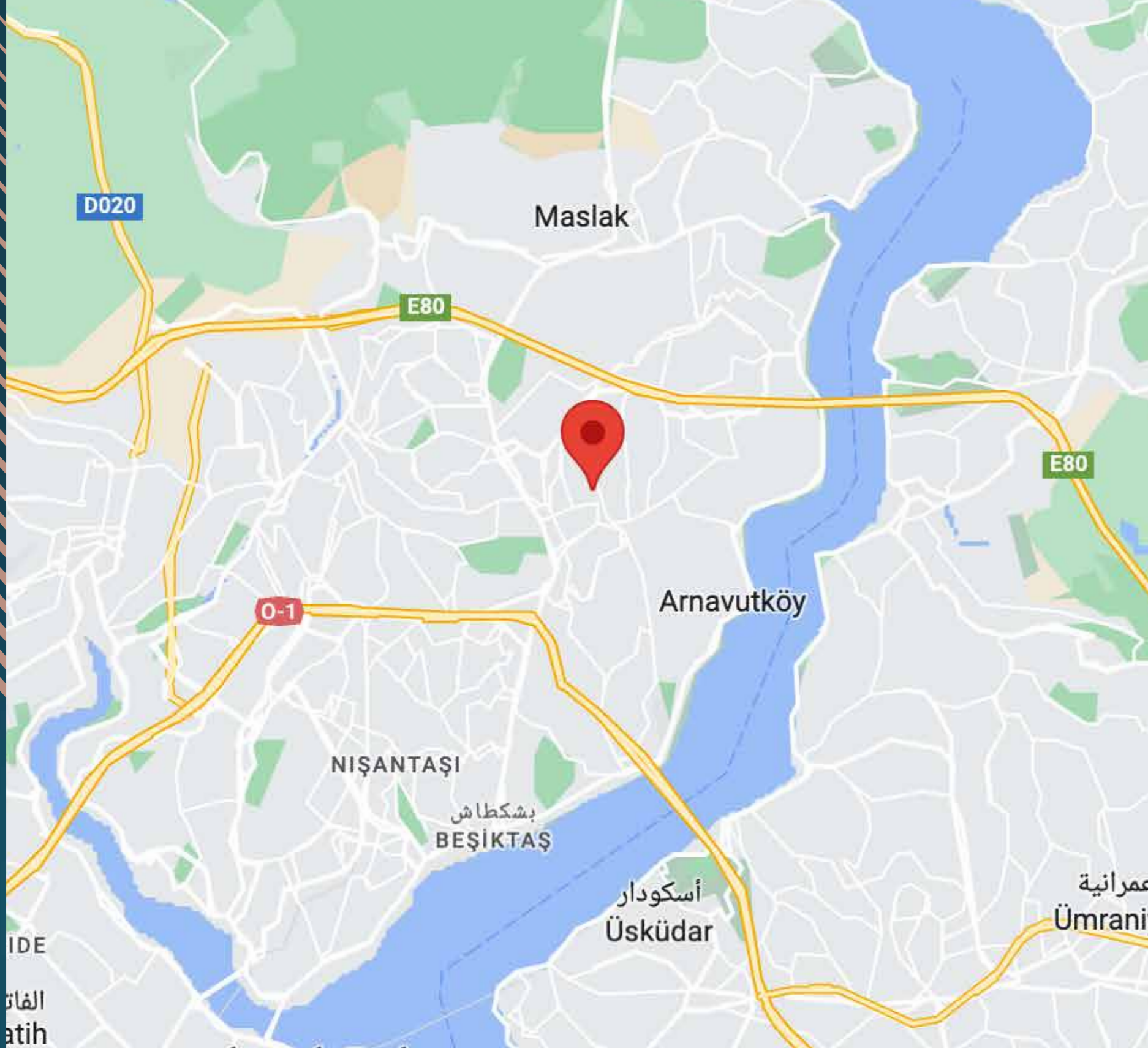
Discover an array of living options tailored to your preferences. Whether you're seeking a cozy 1+1, a spacious 2+1, or a roomy 3+1 apartment, Etiler's 112 residences have something to suit every taste. The highlight? An expansive terrace adorned with a refreshing pool – a private oasis in the midst of the urban excitement. The inclusion of commercial areas further enhances the convenience factor, making daily errands a breeze.



Security and peace of mind take center stage at this new address. With state-of-the-art security measures in place, you can relish the freedom to explore the surrounding neighborhoods, engage in social activities, or unwind without worry. Ample parking and storage spaces effortlessly accommodate your practical needs, ensuring that convenience is never compromised.

Etiler isn't just a residential area; it's a thriving community designed for a life well-lived. For families, a secure and nurturing environment awaits their children, offering them the space to grow and explore safely. Commuting becomes a breeze with excellent transportation connections, simplifying your daily journey to work and back.

Come, be a part of a modern tale that seamlessly weaves the rich tapestry of Istanbul's cultural heritage with cutting-edge architectural brilliance. Your new home in Etiler isn't just an address; Very high-value investment and property welfare. Embrace the essence of Istanbul – right from the heart of the city to the core of your lifestyle.



# PROPERTY LOCATION

It is 30 minutes away from Istanbul Airport.

It is 26 minutes away from Taksim.

It is 8 minutes away from the Bosphorus Bridge.

It is 15 minutes away from Cevahir Mall.

It is 5 minutes away from Metrocity Mall.

It is 7 minutes away from hospitals.

It is 5 minutes away from schools.



# PROPERTY FEATURES

- ✓ Gardens
- ✓ Gym
- ✓ Garage
- ✓ Elevator
- ✓ Security
- ✓ Earthquake-resistant
- ✓ Near by metro



INVESTMENT REAL ESTATE INVESTMENT REAL ESTATE INVESTMENT REAL ESTATE INVESTMENT REAL ESTATE

# PROPERTY PHOTOS



ESTATE INVESTMENT REAL ESTATE INVESTMENT REAL ESTATE INVESTMENT REAL ESTATE INVESTMENT REAL ESTATE INVESTMENT REAL ESTATE INVESTMENT REAL ESTATE INVESTMENT

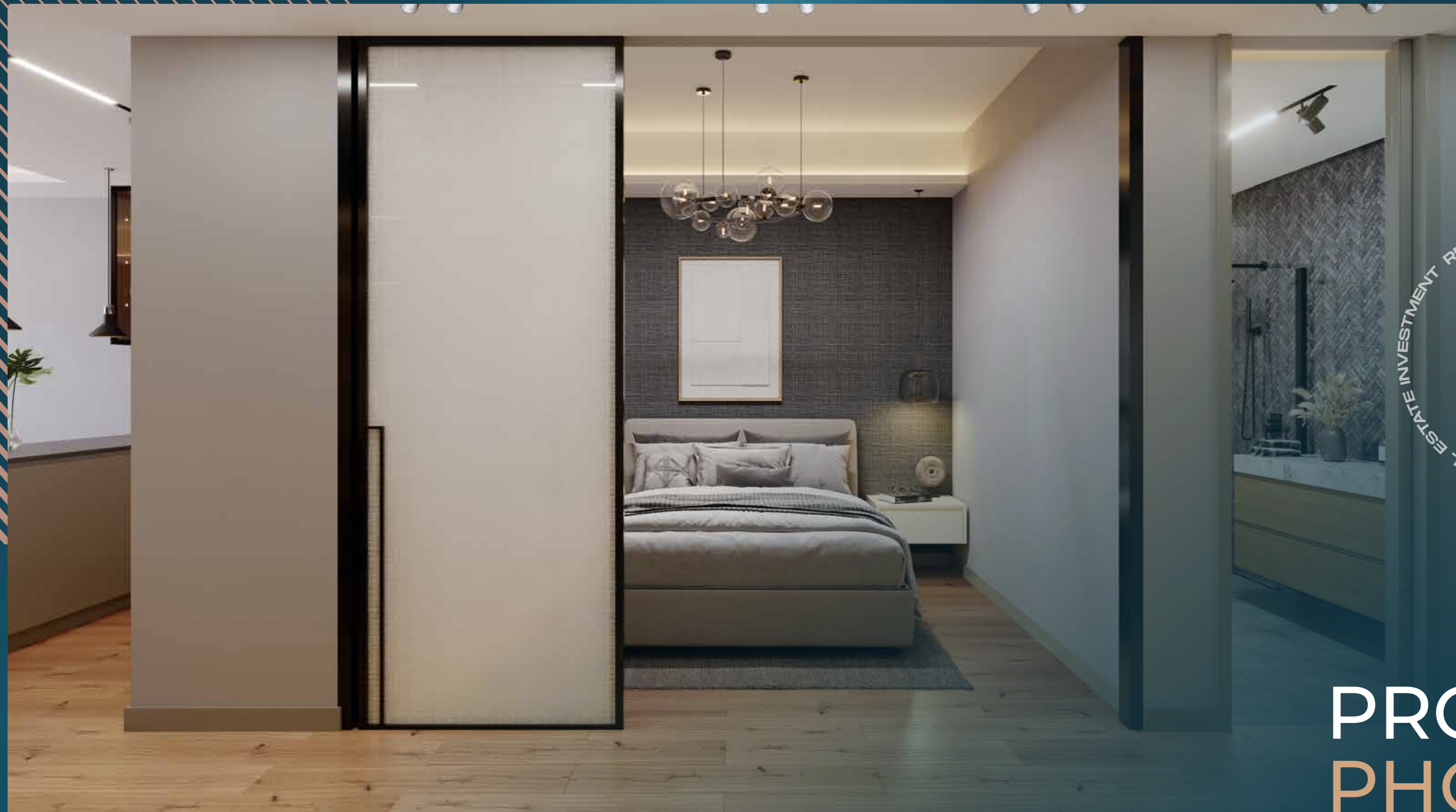
# PROPERTY PHOTOS





REAL ESTATE INVESTMENT REAL ESTATE INVESTMENT REAL ESTATE INVESTMENT REAL ESTATE INVESTMENT

# PROPERTY PHOTOS



REAL ESTATE INVESTMENT REAL ESTATE INVESTMENT REAL ESTATE INVESTMENT REAL ESTATE INVESTMENT

# PROPERTY PHOTOS



REAL ESTATE INVESTMENT REAL ESTATE INVESTMENT REAL ESTATE INVESTMENT REAL ESTATE INVESTMENT

# PROPERTY PHOTOS



ESTATE INVESTMENT REAL ESTATE INVESTMENT REAL ESTATE INVESTMENT REAL ESTATE INVESTMENT

# PROPERTY PHOTOS

**LS** LUXURY  
SIGNATURE

*luxury living*



ESTATE INVESTMENT REAL ESTATE INVESTMENT REAL ESTATE INVESTMENT REAL ESTATE INVESTMENT

# PROPERTY PHOTOS



ESTATE INVESTMENT REAL ESTATE INVESTMENT REAL ESTATE INVESTMENT REAL ESTATE INVESTMENT REAL ESTATE INVESTMENT

# PROPERTY PHOTOS

**LS** LUXURY  
SIGNATURE

*luxury living*











CONTACT  
US

0 212 924 97 37  
info@luxurysignature.net  
www.luxurysignature.net

Skyland İstanbul, Huzur Mah.  
Cendere Cad. 515/B Blok,  
Sarıyer/İstanbul