



LS219

Luxury apartments
in Istanbul
Bahçeşehir

 **BAHÇEŞEHİR**

Luxury living

LS LUXURY
SIGNATURE

REAL ESTATE INVESTMENT



PROPERTY DESCRIPTION

Strategic Location, Luxury Living, Smart Investment

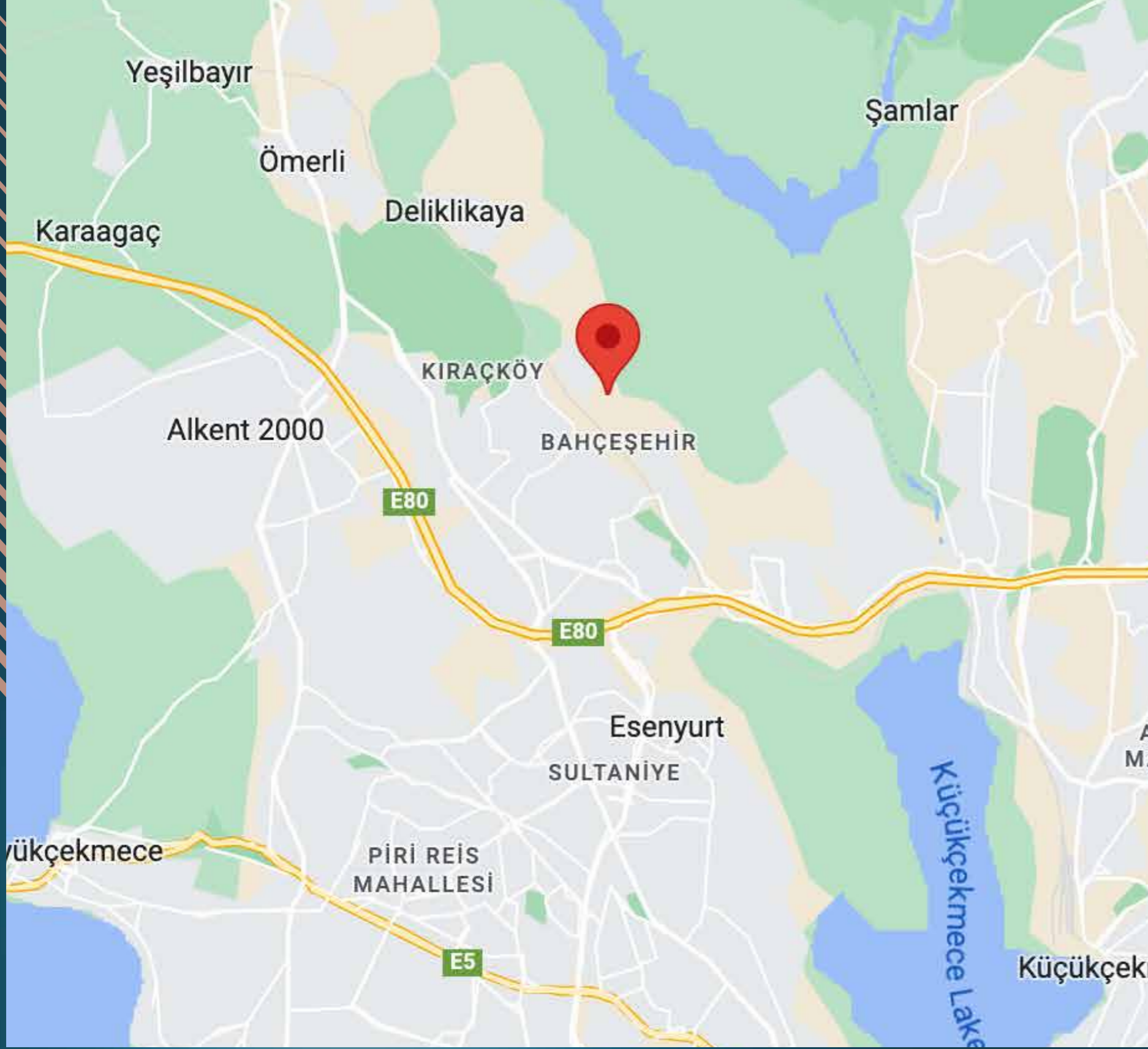
This project stands as one of the most ambitious developments in the area, currently under construction with an anticipated completion date of July 2025. The project boasts a diverse array of residential and commercial units, ranging from 1+1 apartments to as large as 5+1, offering multiple options to suit all needs and tastes. In addition, the development features an array of sports and leisure amenities including a soccer field, basketball court, sauna, Turkish bath, and even an indoor swimming pool.



The project benefits from its strategic location near major transportation hubs. It is situated just 30 minutes away from the Marmaray station and 40 minutes from the New Istanbul Airport. This makes it easy and quick to access surrounding areas and even other cities.



Located in proximity to several well-known hospitals and medical centers, the project provides the convenience of healthcare access within a short drive. For example, the Estineya University Hospital is 15 minutes away and the Basaksehir Government Hospital is 28 minutes away. Furthermore, there are several schools and universities near the project, such as Bilkent University and Yavuz Sultan Selim School. With all these advantages, this development emerges as an ideal choice for both living and future investment.



PROPERTY LOCATION

It is 35 minutes away from Istanbul Airport

It is 40 minutes away from Taksim

It is 25 minutes away from Marmara Park Mall

It is 22 minutes away from Mall of Istanbul

It is 25 minutes away from ArenaPark Mall

It is 3 minutes away from shopping centers

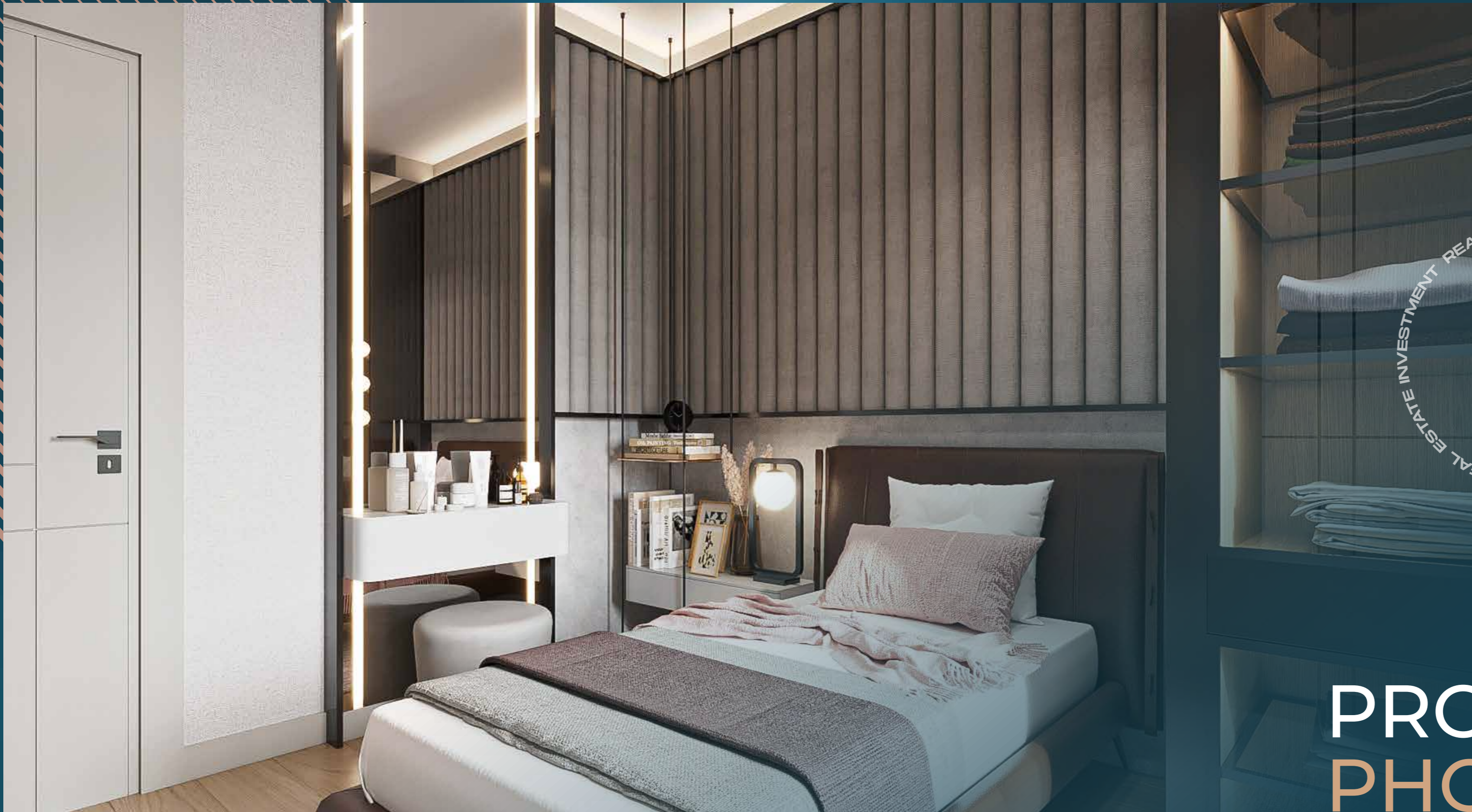
It is 4 minutes away from hospitals

It is 6 minutes away from schools



PROPERTY FEATURES

- ✓ Garage
- ✓ Swimming Pool
- ✓ Sauna
- ✓ Gardens
- ✓ Play grounds
- ✓ Elevator
- ✓ Security



ESTATE INVESTMENT REAL ESTATE INVESTMENT REAL ESTATE INVESTMENT REAL ESTATE INVESTMENT REAL ESTATE INVESTMENT

PROPERTY PHOTOS

LS LUXURY
SIGNATURE

luxury living

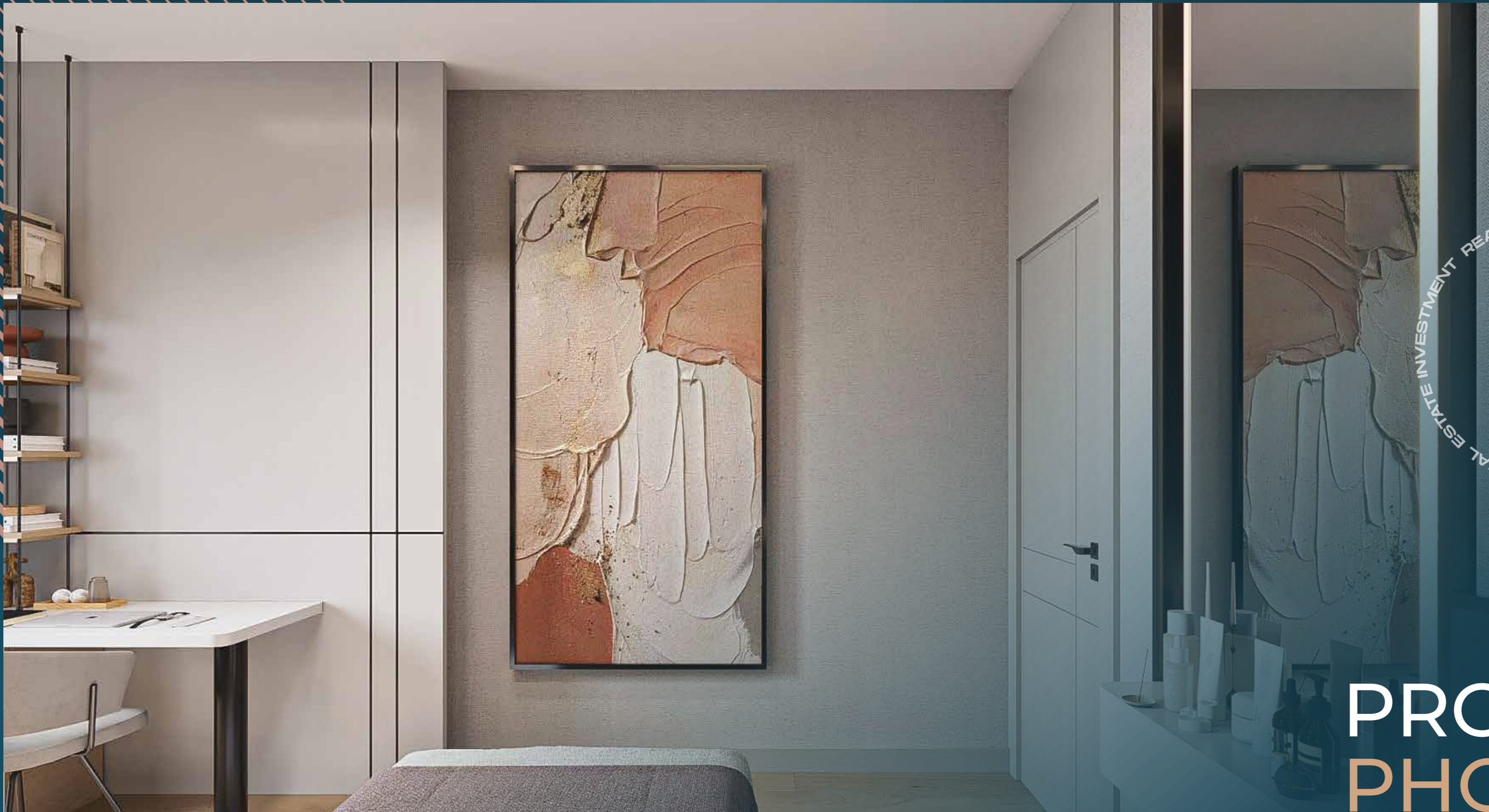


ESTATE INVESTMENT REAL ESTATE INVESTMENT REAL ESTATE INVESTMENT REAL ESTATE INVESTMENT

PROPERTY PHOTOS

LS LUXURY SIGNATURE

luxury living



REAL ESTATE INVESTMENT REAL ESTATE INVESTMENT REAL ESTATE INVESTMENT

PROPERTY PHOTOS



REAL ESTATE INVESTMENT REAL ESTATE INVESTMENT REAL ESTATE INVESTMENT

PROPERTY PHOTOS

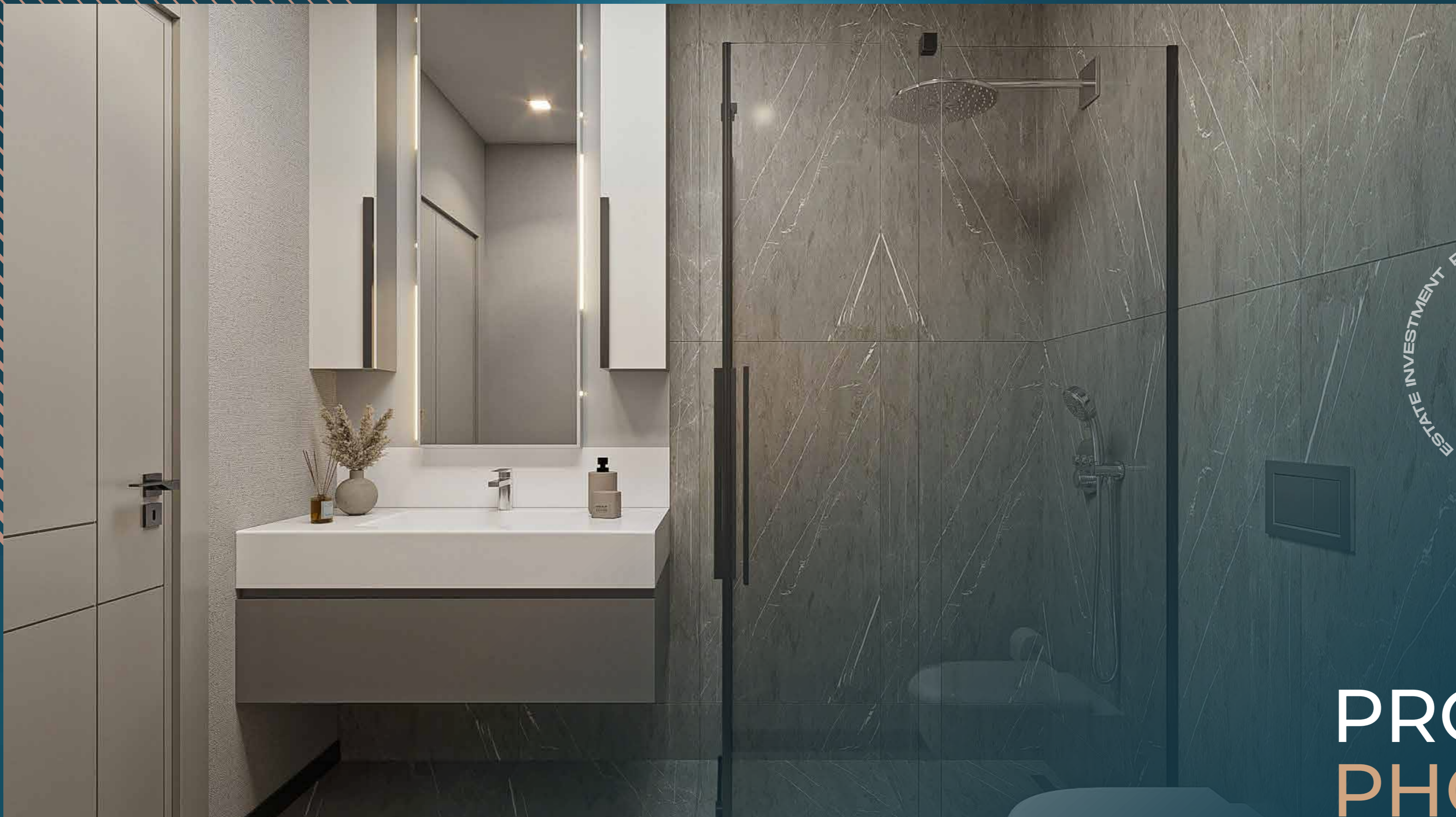
LS LUXURY
SIGNATURE

luxury living



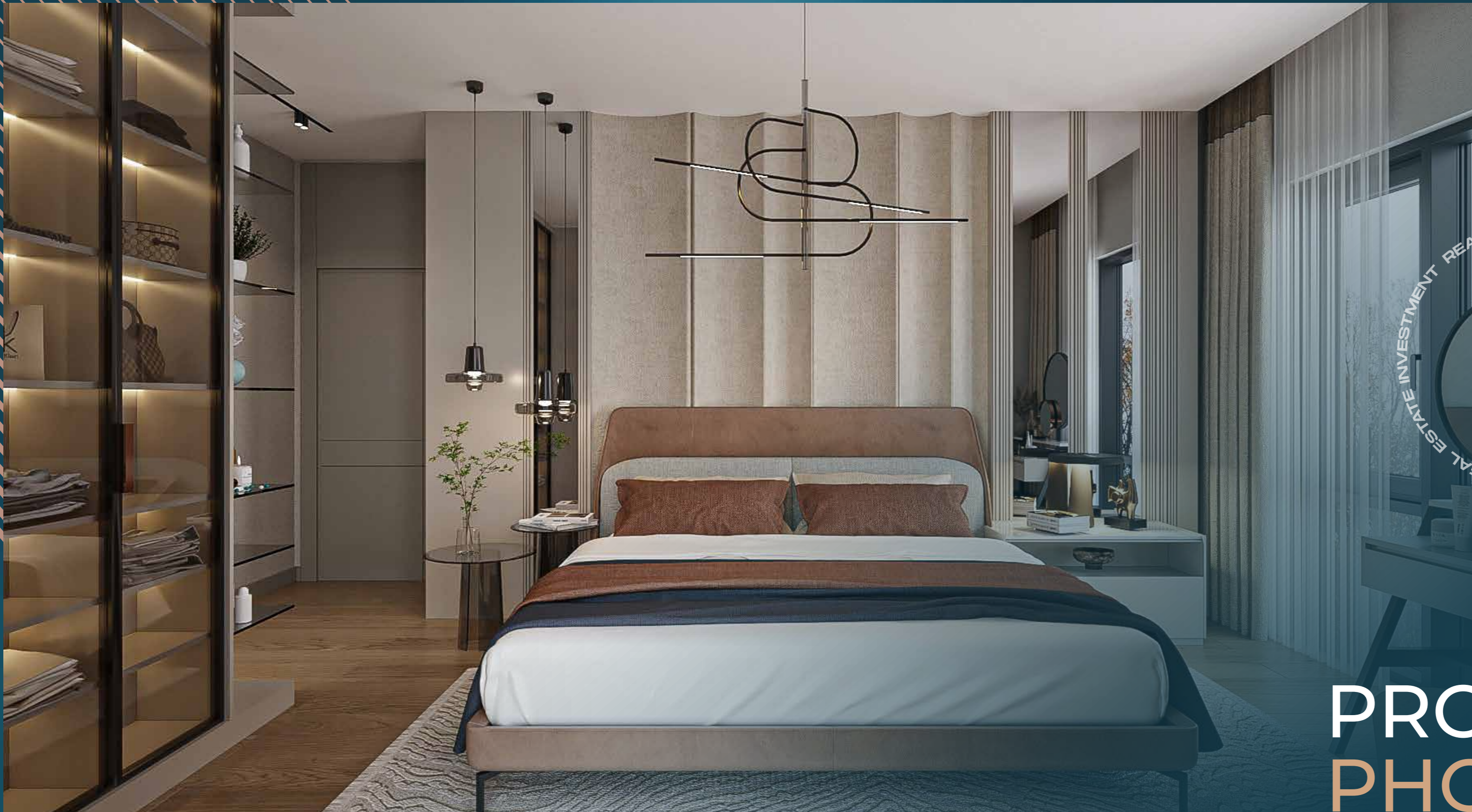
ESTATE INVESTMENT REAL ESTATE INVESTMENT REAL ESTATE INVESTMENT REAL ESTATE INVESTMENT REAL ESTATE INVESTMENT REAL ESTATE INVESTMENT

PROPERTY PHOTOS



REAL ESTATE INVESTMENT REAL ESTATE INVESTMENT REAL ESTATE INVESTMENT REAL ESTATE INVESTMENT

PROPERTY PHOTOS



ESTATE INVESTMENT REAL ESTATE INVESTMENT REAL ESTATE INVESTMENT REAL ESTATE INVESTMENT REAL ESTATE INVESTMENT REAL ESTATE INVESTMENT

PROPERTY PHOTOS

LS LUXURY
SIGNATURE

luxury living



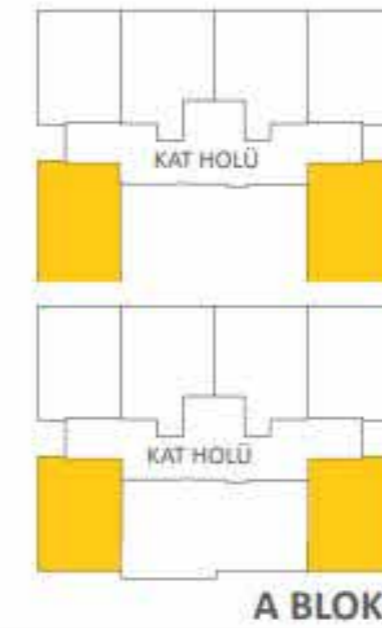
1+1 LOFT 4 ADET

1 ANTRE	6,04 m ²
2 SALON/MUTFAK	34,67 m ²
3 BANYO	5,36 m ²
4 EBV. BANYO	3,93 m ²
5 EBV. YATAK ODASI	20,33 m ²
6 BALKON	3,10 m ²

NET ALAN	70,33 m²
BALKON	3,10 m ²
DEPO	2,00 m ²

NET ALAN + BALKON	73,43 m²
DAİRE BRÜT ALANI	89,71 m²
SATIŞA ESAS ALAN	105,36 m²

DAİRE NO 3-5





4+1 ÇATI

2 ADET

1 ANTRE	5,83 m ²
2 MUTFAK	13,28 m ²
3 SALON	44,15 m ²
4 YATAK ODASI	10,99 m ²
5 YATAK ODASI	12,42 m ²
6 YATAK ODASI	13,96 m ²
7 EBV. YATAK ODASI	20,81 m ²
8 GİYSİ ODASI	4,40 m ²
9 EBV.BANYO	4,58 m ²
10 BANYO	4,38 m ²
11 İŞLİK	3,10 m ²
12 HOL	11,91 m ²
13 BALKON	30,37 m ²

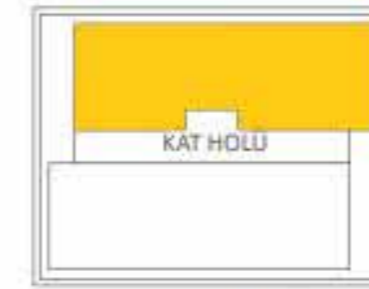
NET ALAN	149,81 m²
BALKON	30,37 m ²
DEPO	2,00 m ²

NET ALAN + BALKON	180,18 m²
DAİRE BRÜT ALANI	199,34 m²

SATIŞA ESAS ALAN	249,83 m²
TAHSİSLİ TERAS	52,97 m²

DAİRE NO

31



A BLOK





4+1 ÇATI

2 ADET

1 ANTRE	5,83 m ²
2 MUTFAK	13,28 m ²
3 SALON	44,15 m ²
4 YATAK ODASI	10,99 m ²
5 YATAK ODASI	12,42 m ²
6 YATAK ODASI	13,96 m ²
7 EBV. YATAK ODASI	20,81 m ²
8 GİYSİ ODASI	4,40 m ²
9 EBV.BANYO	4,58 m ²
10 BANYO	4,38 m ²
11 İŞLİK	3,10 m ²
12 HOL	11,91 m ²
13 BALKON	30,37 m ²

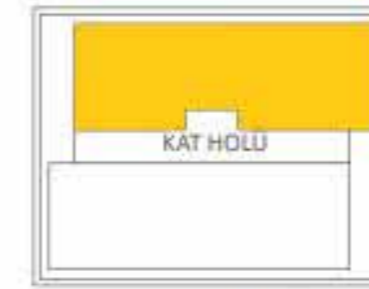
NET ALAN	149,81 m²
BALKON	30,37 m ²
DEPO	2,00 m ²

NET ALAN + BALKON	180,18 m²
DAİRE BRÜT ALANI	199,34 m²

SATIŞA ESAS ALAN	249,83 m²
TAHSİSLİ TERAS	52,97 m²

DAİRE NO

31



A BLOK





4+1 ÇATI

2 ADET

1 ANTRE	13,10 m ²
2 MUTFAK	14,80 m ²
3 SALON	42,32 m ²
4 YATAK ODASI	12,11 m ²
5 YATAK ODASI	12,42 m ²
6 YATAK ODASI	13,96 m ²
7 EBV. YATAK ODASI	20,81 m ²
8 GİYSİ ODASI	4,41 m ²
9 EBV.BANYO	4,56 m ²
10 BANYO	5,25 m ²
11 IŞLIK	4,72 m ²
12 HOL	8,64 m ²
13 BALKON	31,49 m ²

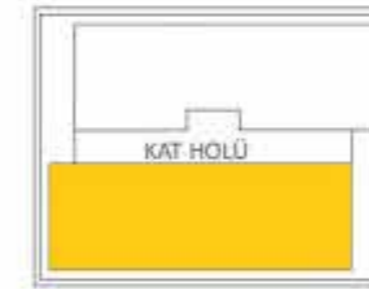
NET ALAN	157,10 m²
BALKON	31,49 m ²
DEPO	2,00 m ²

NET ALAN + BALKON	188,59 m²
DAİRE BRÜT ALANI	207,37 m²

SATIŞA ESAS ALAN	259,81 m²
TAHSİSLİ TERAS	52,96 m²

DAİRE NO

30



A BLOK





CONTACT
US

0 212 924 97 37
info@luxurysignature.net
www.luxurysignature.net

Skyland İstanbul, Huzur Mah.
Cendere Cad. 515/B Blok,
Sarıyer/İstanbul