



LS363: FAMILY APARTMENTS IN
BESIKTAS DISTRICT IN ISTANBUL,
NEAR THE BOSPHORUS

Besiktas, Istanbul

REAL ESTATE INVESTMENT



Luxury Investing

PROPERTY DESCRIPTION

The project is strategically located in the bustling Besiktas district, the vibrant core of European Istanbul.

This luxury boutique development spans a land area of 1.500 square meters and comprises two blocks housing a total of 52 apartments.



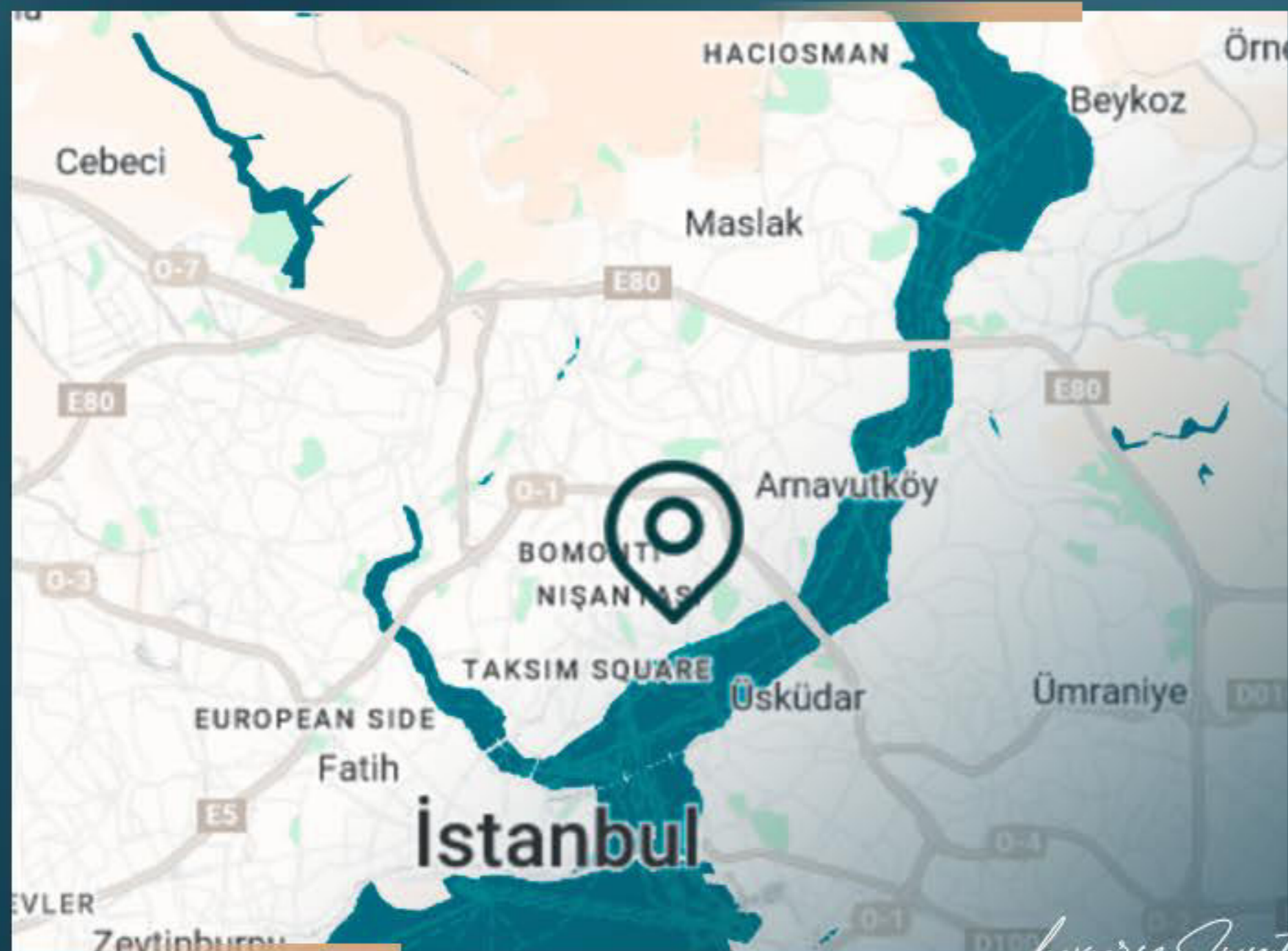
Residents enjoy a range of social amenities designed for a comfortable lifestyle, including secure parking facilities and round-the-clock security.

A welcoming lobby is available where children can safely wait for service vehicles in designated waiting areas at the project entrance.



Additionally, specially designed playgrounds provide a safe environment for children, while expansive landscaped areas offer residents the opportunity to enjoy quality time with their families in the comfort of their home surroundings.

REAL ESTATE INVESTMENT



PROPERTY LOCATION

- It is 3 minutes away from the metro station
- It is 6 minutes away from the Bosphorus bridge
- It is 10 minutes away from Yildiz Palace Museum
- It is 10 minutes away from Dolmabahce Palace
- It is 10 minutes away from Yildiz Park
- It is 15 minutes away from Taksim

Luxury Investing



PROPERTY FEATURES



Gardens



Elevator



Security



Garage



REAL ESTATE INVESTMENT

PROJECT PHOTOS

Luxury Investing



REAL ESTATE INVESTMENT
PROJECT
PHOTOS

Luxury Investing



PROJECT
PHOTOS

REAL ESTATE INVESTMENT

Luxury Investing



PROJECT
PHOTOS

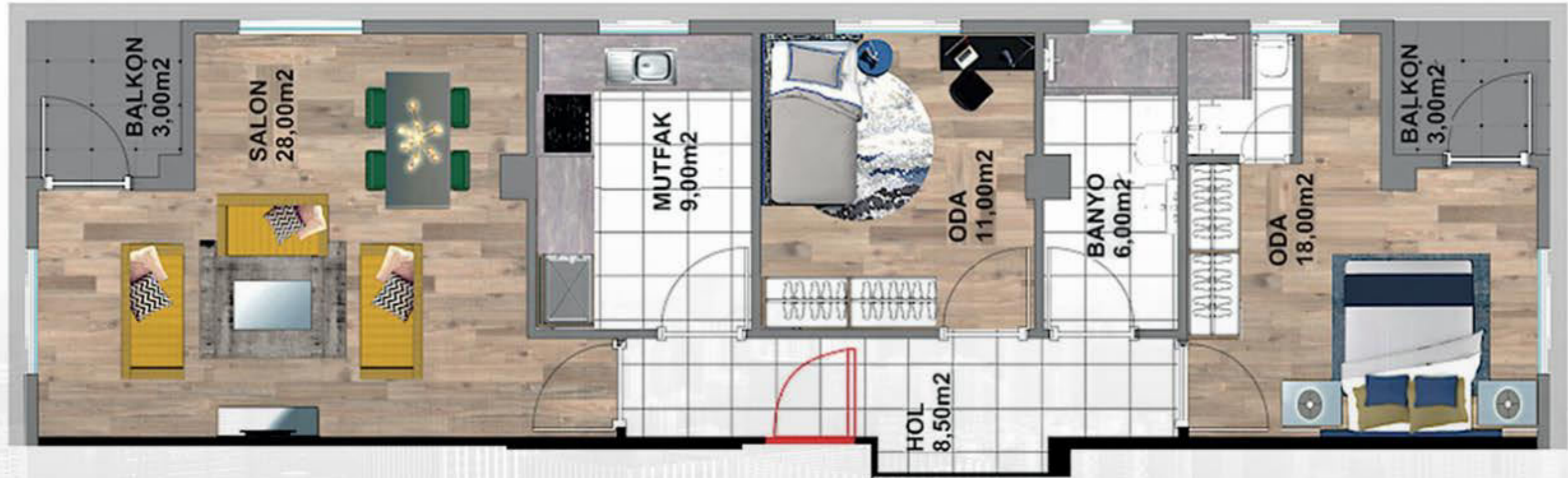
REAL ESTATE INVESTMENT

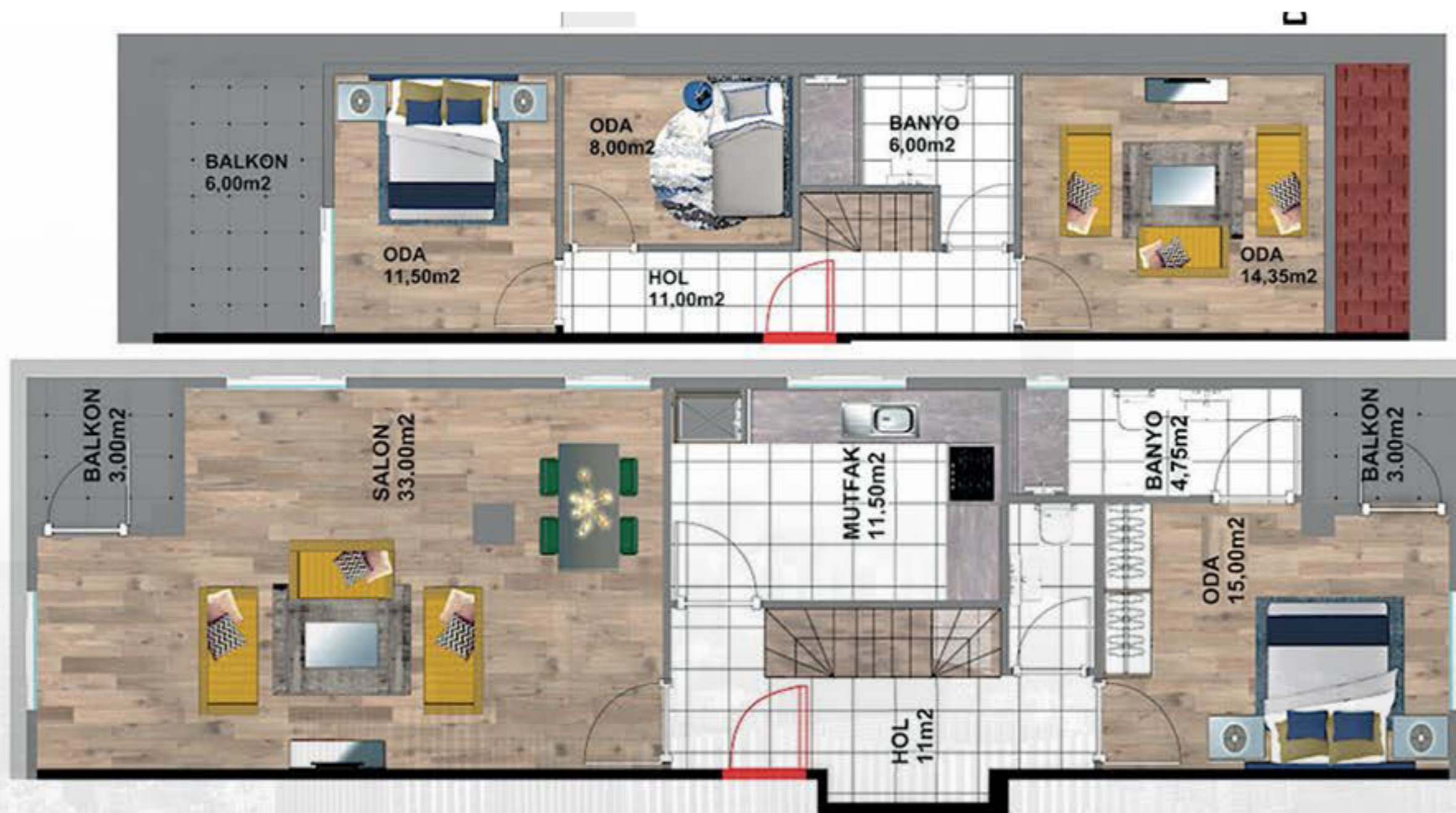
Luxury Investing



PROJECT
PHOTOS

REAL ESTATE INVESTMENT







CONTACT
US

0 212 924 97 37
info@luxurysignature.net
www.luxurysignature.net

Skyland İstanbul, Huzur Mah.
Cendere Cad. 515/B Blok,
Sarıyer/İstanbul