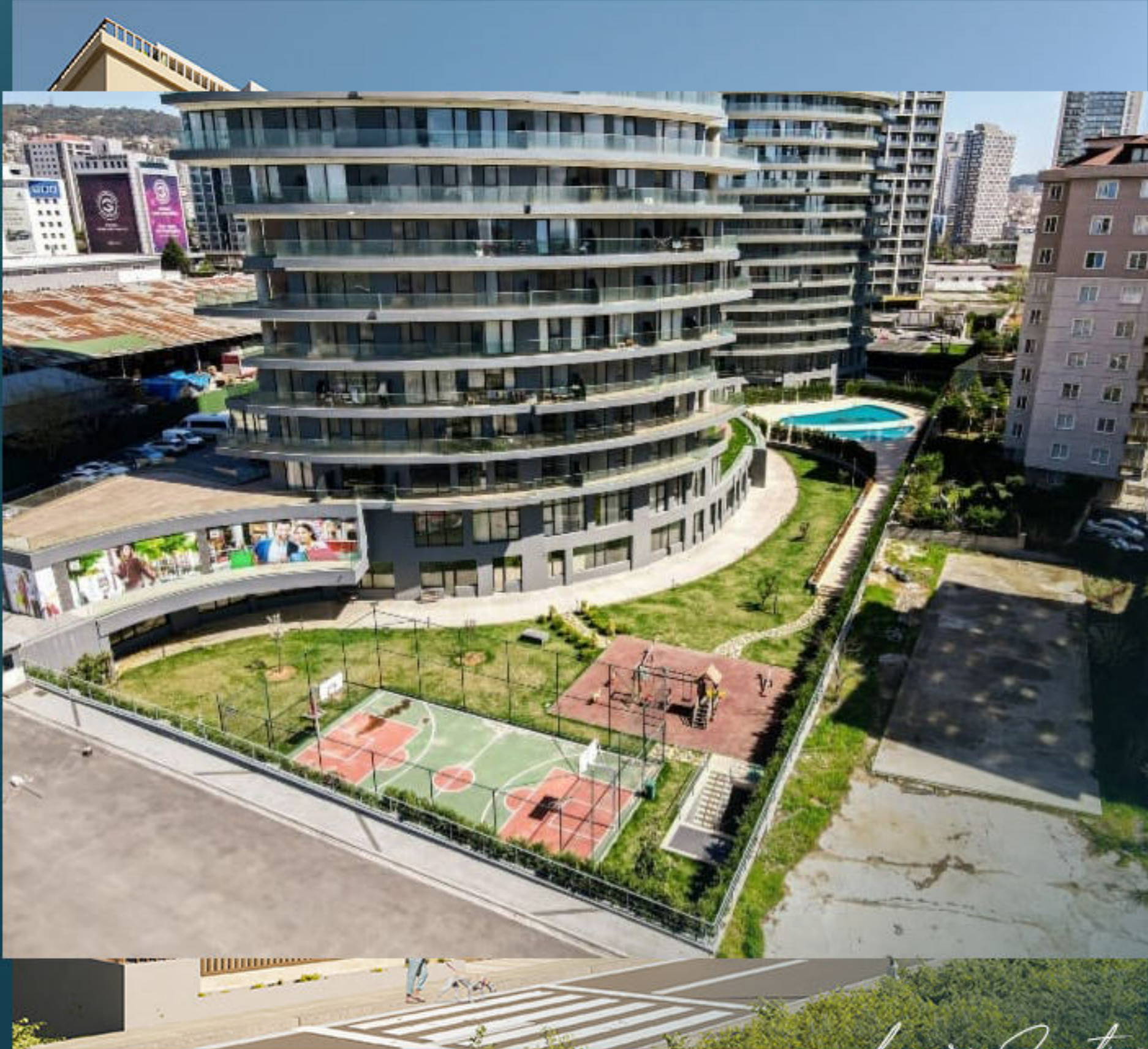




REAL ESTATE INVESTMENT

# LS163: TOWERS WITH PANORAMIC VIEW OF THE SEA AND ISLANDS IN KARTAL

Istanbul, Kartal



## PROPERTY DESCRIPTION

The project is located in Kartal district, the new attraction center of Istanbul. Kartal is the area that increases in value most, besides being one of the most reliable districts of Istanbul. Also, Kartal area has a unique panoramic landscape with Marmara sea and Islands landscape.



*Luxury Investing*

The project is located at the center of transportation, which is at a few steps distance from E5 highway, and a few minutes to Sabiha Airport, metro, IDO pier, marinas, fast train, coastal road and TEM highway.

The project is also located in the center of education with 15 university campuses surrounding it, and has the status of one of the districts where education level is at its utmost level. Moreover, Kartal is the most important area of the health sector, with its 62 hospitals having a capacity of 11.280 beds.



*Luxury Investing*

This project, which is located on E5 highway, right next to Kartal bridge, comes to the forefront with its closeness to Kartal coastal strip. Its location is between IstMarina and Pendik Marina, and is very close to Sabiha Airport.

It is a distinguished project both with its architecture and its other features in Kartal. In this project, you will enjoy the magnificent view of the sea from your terrace. Your life will be full of peace and calmness with this project.

This project offers a wonderful view of the sea and islands.



*Luxury Investing*

## PROPERTY LOCATION

It is 3 km away from Pendik Marina

It is 2 km away from IstMarina

It is 1.8 km away from Coastal road

It is 600 meters away from metro station

It is 8 km away from Sabiha Airport

It is 5 km away from Bagdat Avenue

It is 3 km away from Kartal Courthouse



*Luxury Investing*

# PROPERTY FEATURES



Swimming Pool



Garage



Gardens



Elevator



Gym



Sauna



Security



Turk Hamam

*Luxury Investing*



REAL ESTATE INVESTMENT

# PROJECT PHOTOS

*Luxury Investing*



PROJECT  
PHOTOS

REAL ESTATE INVESTMENT



*Luxury Investing*



PROJECT  
PHOTOS

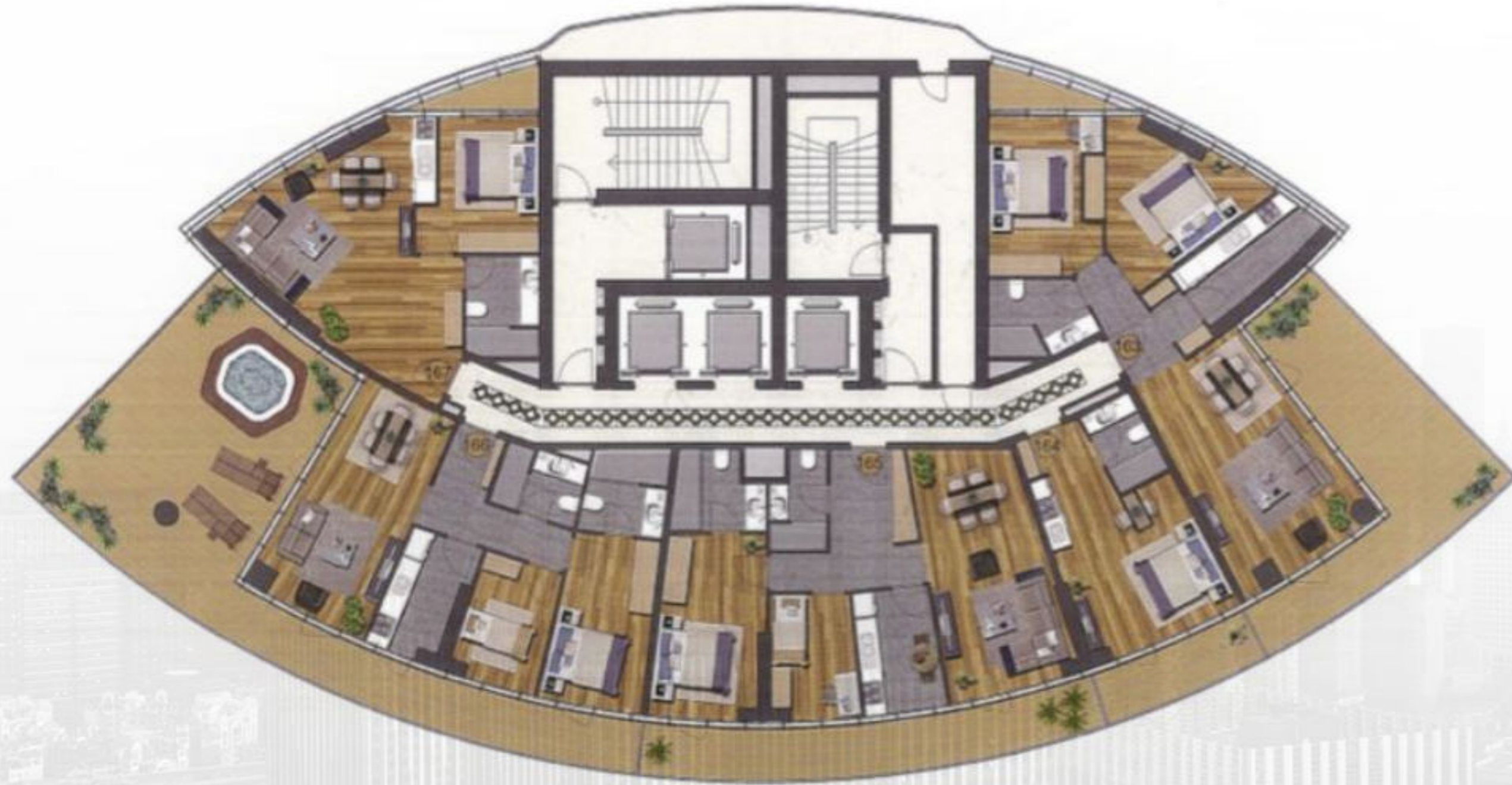
REAL ESTATE INVESTMENT

*Luxury Investing*



PROJECT  
PHOTOS

REAL ESTATE INVESTMENT





CONTACT  
US

0 212 924 97 37  
info@luxurysignature.net  
www.luxurysignature.net

Skyland İstanbul, Huzur Mah.  
Cendere Cad. 515/B Blok,  
Sarıyer/İstanbul