



**LS28:**

LUXURY UNDER-CONSTRUCTION  
RESIDENCES IN NISANTASI

Istanbul, Sisli

REAL ESTATE INVESTMENT

**LS** LUXURY  
SIGNATURE

*Luxury Investing*





*Luxury Investing*

# PROPERTY DESCRIPTION

Nisantasi, known for its elegance and exclusivity, is home to world-renowned brands like Rolex, Louis Vuitton, Chanel, Prada, and Valentino. The Nisantasi Koru project offers a luxurious residential experience designed for healthy living connected with nature, seamlessly combining the bustling city with serene green spaces.





*Luxury Investing*

## Project Features:

- ◆ **Direct Connection to Nature:** Enjoy clean air and abundant oxygen flowing into your home through spacious terraces connected to living rooms, bedrooms, and kitchens, with a breathtaking view of the historic Ihlamur Palace trees nearby.
- ◆ **Exceptional Design:** High-quality materials and superb architectural design make each home unique. Indulge in luxurious details and spacious interiors with elegant finishes.





*Luxury Investing*

- ◆ **Premium Services:** Benefit from concierge services that include private jet, yacht, or limousine arrangements. Whether you need a gourmet meal prepared or assistance with gardening, every detail has been considered to meet your needs.
- ◆ **Strategic Location:** Located just steps away from schools, hospitals, shopping centers, universities, museums, and cultural attractions, this project offers you the opportunity to experience a modern, integrated lifestyle in the heart of Istanbul.
- ◆ **Exclusive Community:** Spanning 24.000 square meters, the project includes five buildings with nine floors each, featuring 160 apartments ranging from 1+1 to 6+1, making it ideal for families and individuals seeking luxury.



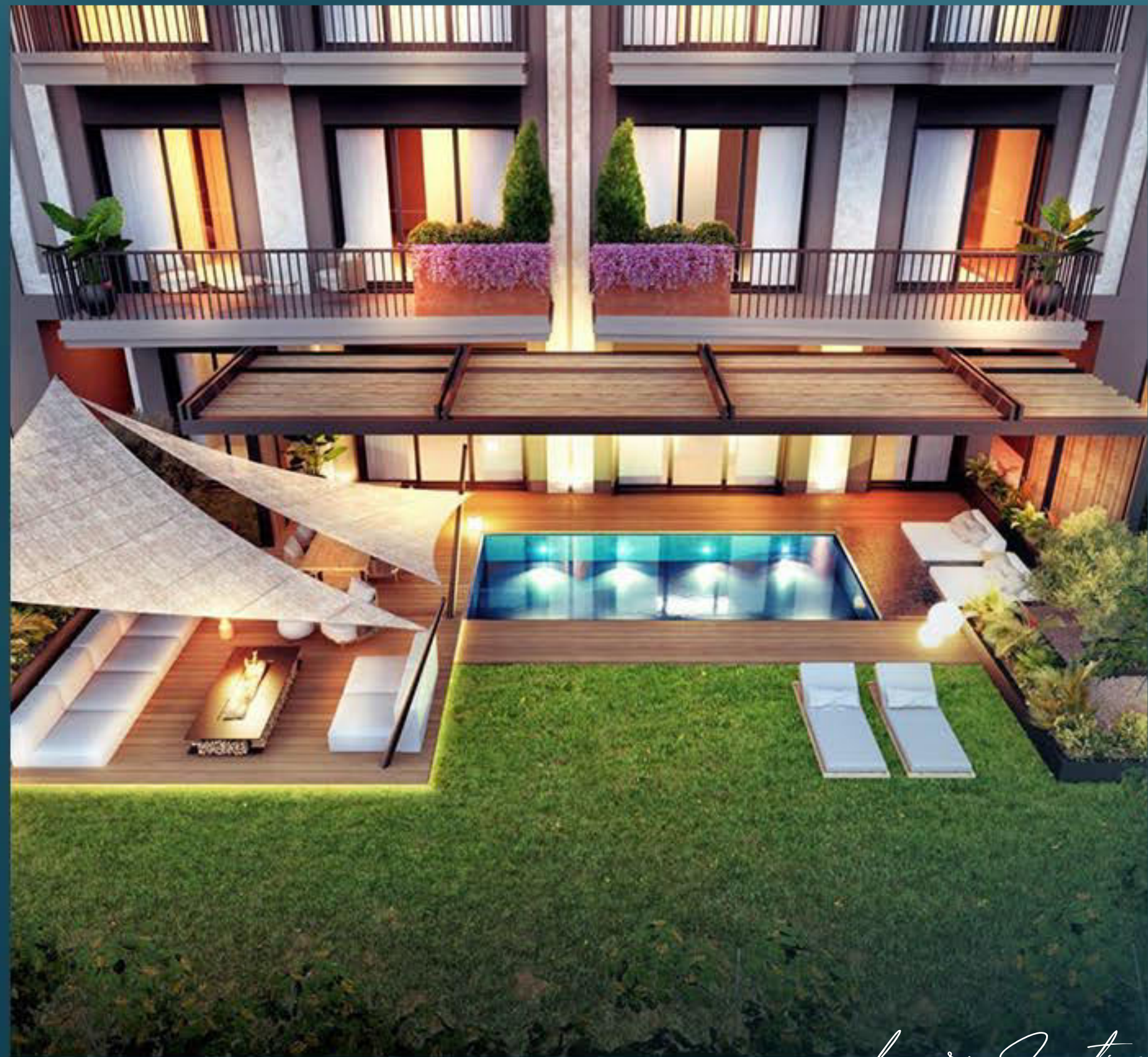


*Luxury Investing*

## Why Choose This Project?

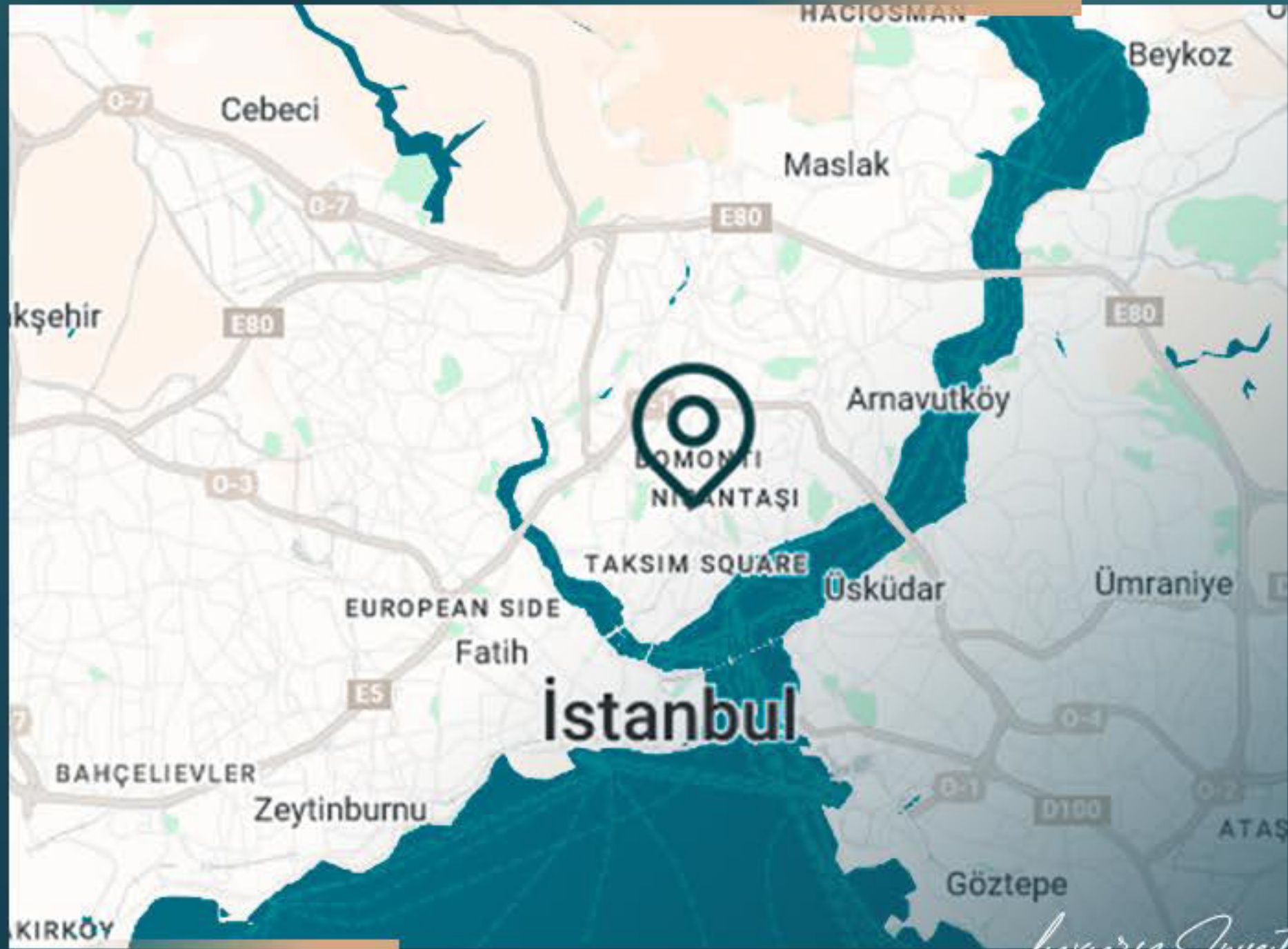
- ◆ Luxurious Lifestyle in the Heart of Istanbul: Enjoy residing in Nisantasi, where luxury meets the perfect location.
- ◆ Seven-Star Hotel Services: Unmatched living experience with high-end services providing every comfort.
- ◆ Exceptional Concierge Service: Receive daily support for personal needs and live hassle-free.
- ◆ Private Infinity Pools: Relax in complete privacy with unparalleled views.





- ◆ Distinctive Interior Design: Featuring ceiling heights up to 8 meters, adding a sense of spaciousness and grandeur.
- ◆ Private Terraces and Gardens: Enjoy wide outdoor spaces with stunning natural views.
- ◆ Spectacular Views: Panoramic vistas of the Bosphorus Strait and Istanbul's skyline.
- ◆ Upscale Social Amenities: Including indoor swimming pool, gym, sauna, Turkish bath, music studio, and spa, ensuring a balanced and diverse lifestyle.





*Luxury Investing*

## PROPERTY LOCATION

- 3 minutes to City's Mall
- 3 minutes to Abdi Ipekci Street
- 5 minutes to The St. Regis Hotel
- 5 minutes to Taksim
- 5 minutes to Dolmabahce Palace
- 5 minutes to Bosphorus Bridge
- 5 minutes to Macka Park
- 5 minutes to Zorlu Center Mall
- 10 minutes to Galata Port
- 30 minutes to Istanbul Airport
- 30 minutes to Sabiha Gokcen Airport





*Luxury Investing*

# PROPERTY FEATURES



Gardens



Elevator



Gym



Sauna



Security



Turk Hamam



Garage



Swimming Pool



*Luxury Investing*



PROJECT  
PHOTOS

REAL ESTATE INVESTMENT



*Luxury Investing*



PROJECT  
PHOTOS

REAL ESTATE INVESTMENT



*Luxury Investing*



PROJECT  
PHOTOS

REAL ESTATE INVESTMENT



*Luxury Investing*



PROJECT  
PHOTOS

REAL ESTATE INVESTMENT



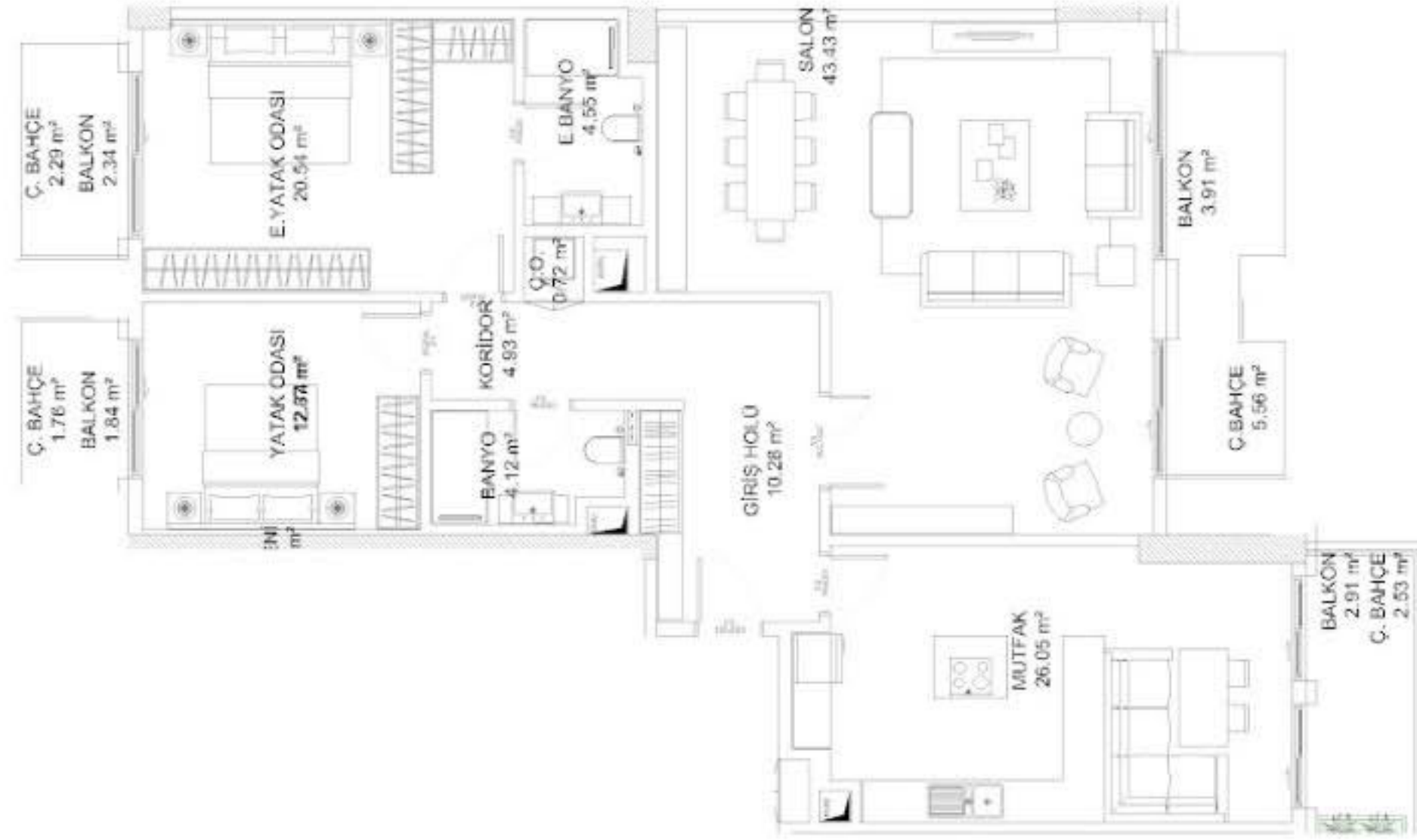
*Luxury Investing*



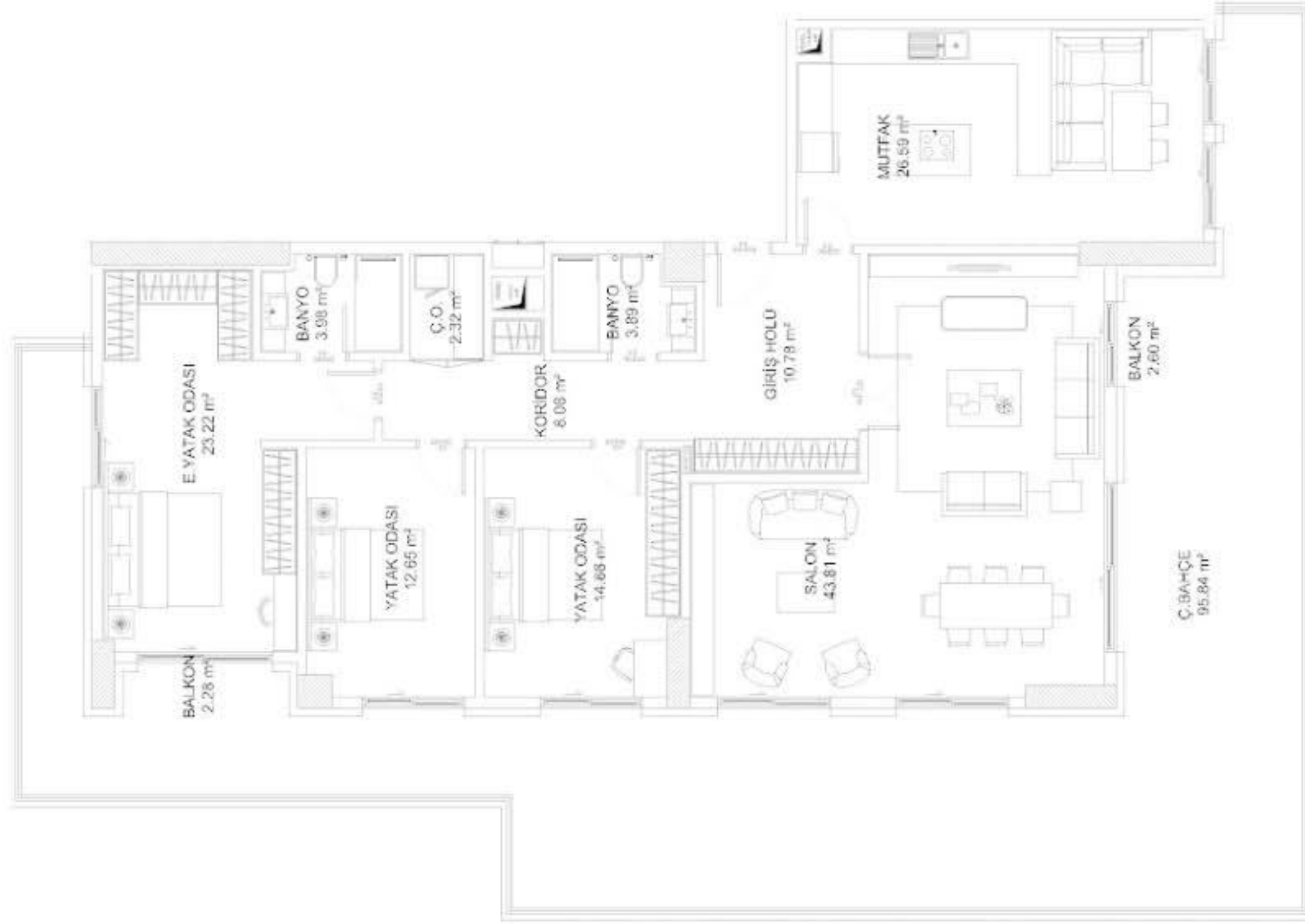
PROJECT  
PHOTOS

REAL ESTATE INVESTMENT

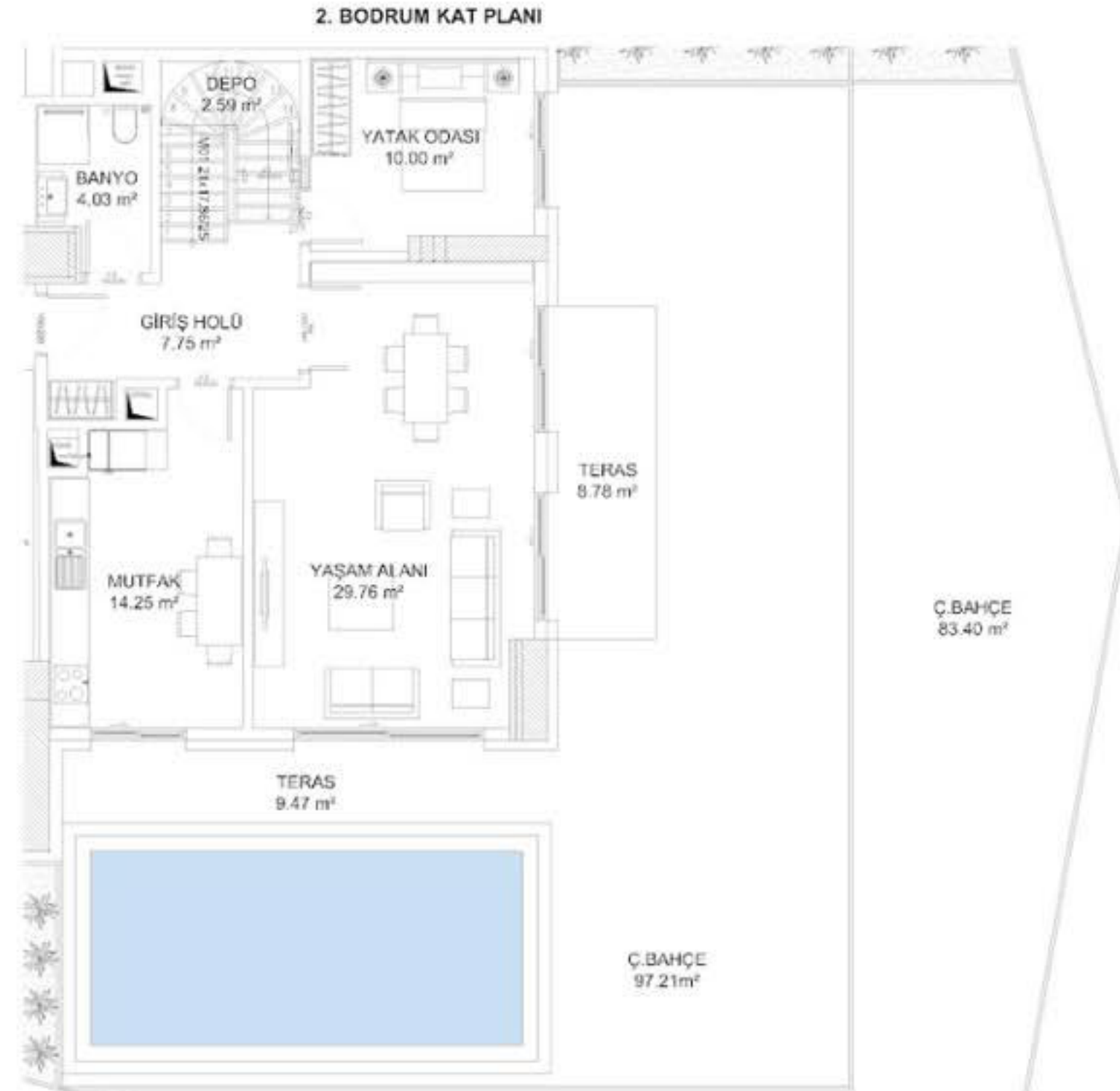
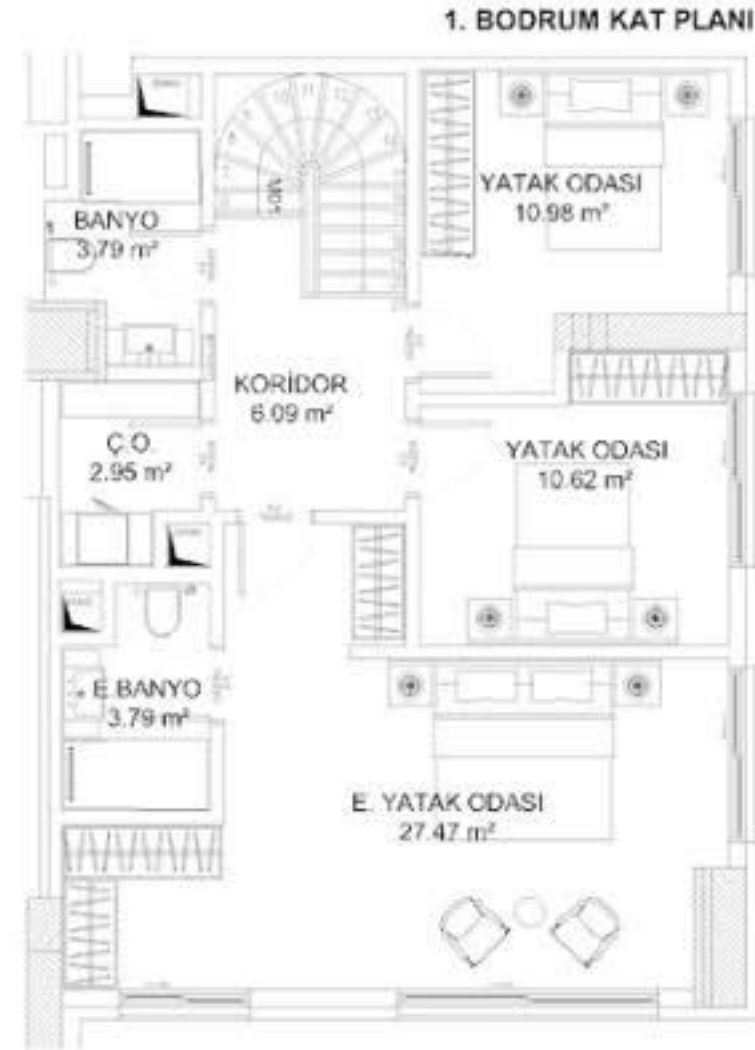
















CONTACT  
US

0 212 924 97 37  
info@luxurysignature.net  
www.luxurysignature.net

Skyland İstanbul, Huzur Mah.  
Cendere Cad. 515/B Blok,  
Sarıyer/İstanbul