



# LS336: FAMILY APARTMENTS IN BEYLİKDUZU NEAR THE SEA AND MARINA

Beylikduzu, Istanbul

**LS** LUXURY  
SIGNATURE

*Luxury Investing*

REAL ESTATE INVESTMENT



## PROPERTY DESCRIPTION

The project has a land area of 16.000 sqm, and it consists of 10 blocks that contain 505 flats of the types 1+2 and 1+3, in addition to 20 shops.

The project is suitable for families as it includes social facilities such as a swimming pool, sauna, fitness center, basketball court, Turkish bath, Playgrounds for children, garden and car park, in addition to the 24 hour security system.



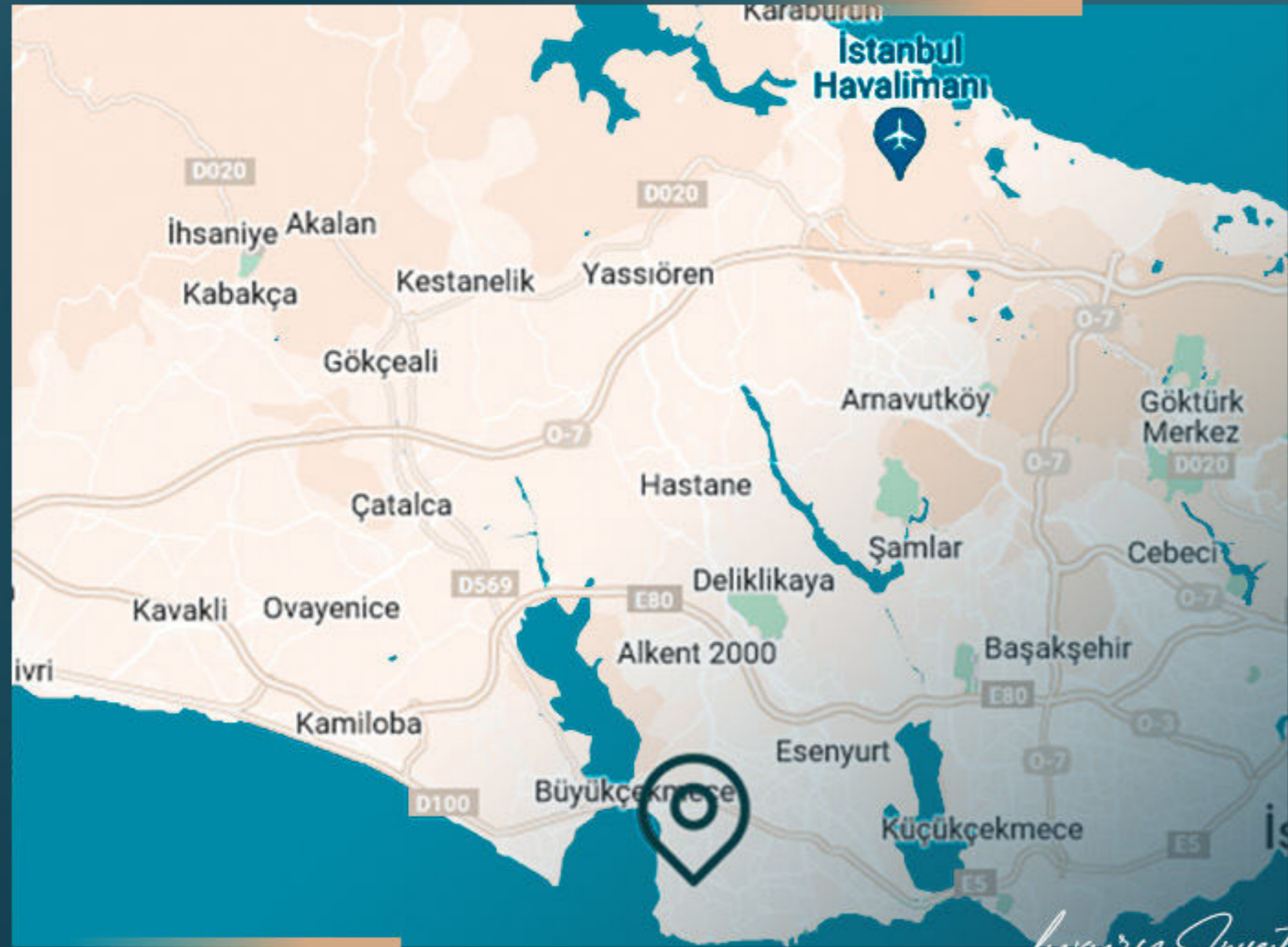
The quality life in a safe and family concept area with beautiful views is waiting for you in this project.

Gurpinar sahil and the marina are just minutes away from your home.



The special location of the project, in Beylikduzu district, close to parks, hospitals, schools and universities, adds investment value to it.

If you are dreaming of a quality life in Istanbul, close to the sea and all services, where your family will enjoy their time in a safe and secure environment, this project has been designed for you.



*Luxury Investing*

## PROPERTY LOCATION

It is 2 minutes away from Gurpınar Sahil

It is 10 minutes away from Büyükçekmece Marina

It is 15 minutes away from Marmara Park Mall

It is 10 minutes away from Perlavista Mall

It is 3 minutes away from hospitals

It is 10 minutes away from Beykent University



# PROPERTY FEATURES



Gardens



Elevator



Gym



Sauna



Security



Turk Hamam



Garage



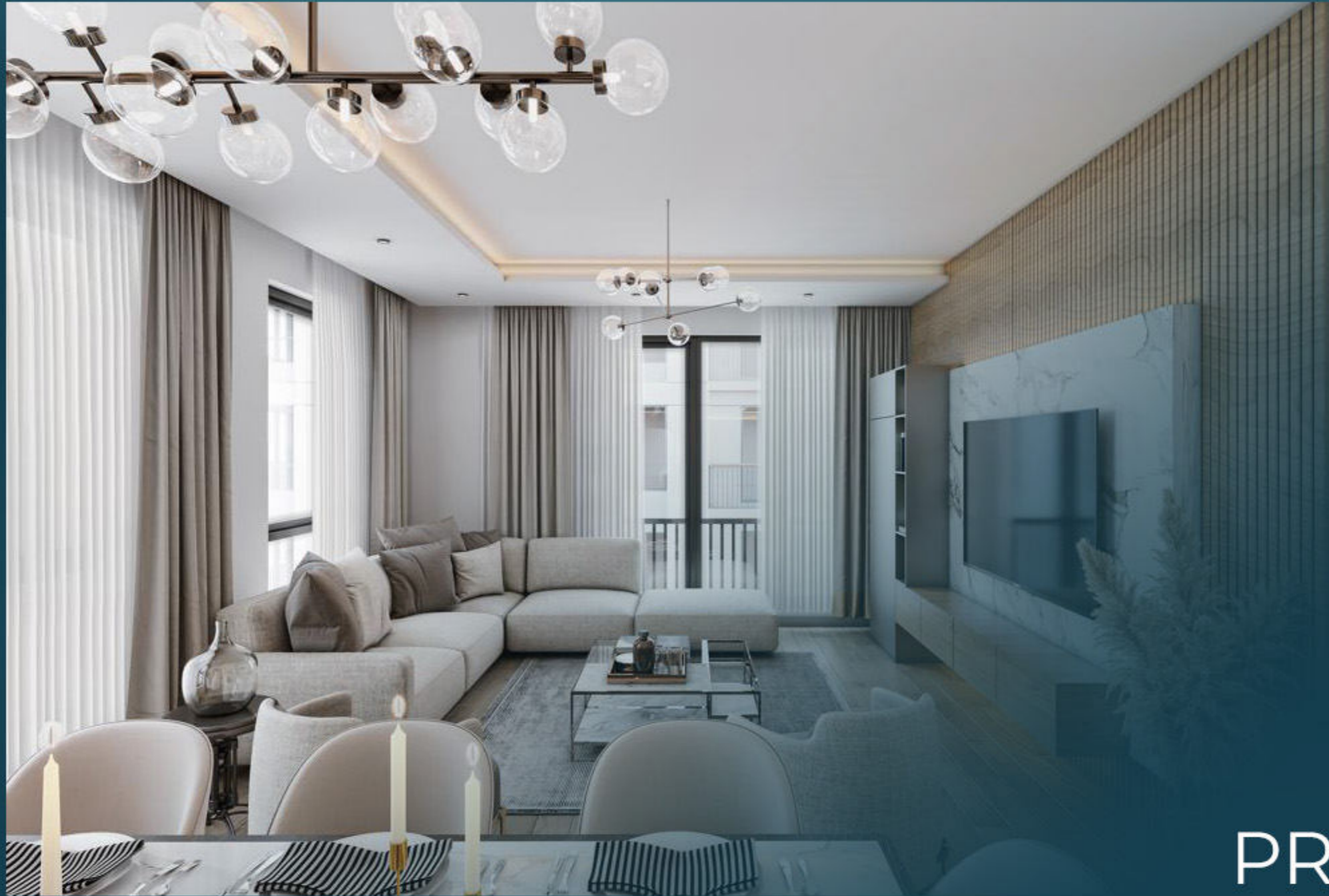
Swimming Pool

*Luxury Investing*



REAL ESTATE INVESTMENT  
PROJECT  
PHOTOS

*Luxury Investing*



PROJECT  
PHOTOS

REAL ESTATE INVESTMENT





PROJECT  
PHOTOS





PROJECT  
PHOTOS

REAL ESTATE INVESTMENT

*Luxury Investing*



REAL ESTATE INVESTMENT  
PROJECT  
PHOTOS







CONTACT  
US

0 212 924 97 37  
info@luxurysignature.net  
www.luxurysignature.net

Skyland İstanbul, Huzur Mah.  
Cendere Cad. 515/B Blok,  
Sarıyer/İstanbul